

# WALLS AND CEILINGS



**PARKLEX PRODEMA**

# **WALLS AND CEILINGS**

**PARKLEX PRODEMA**

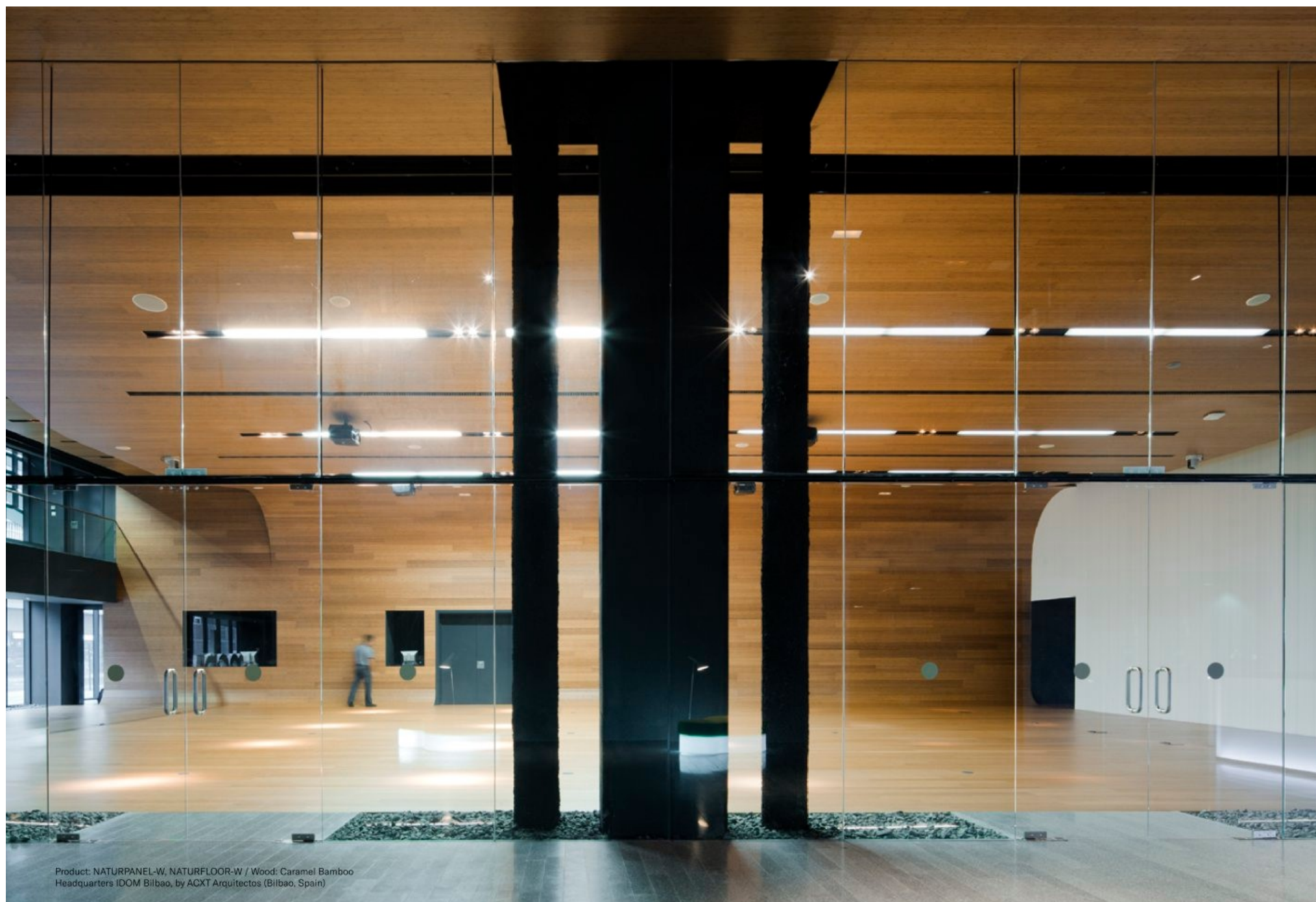


Our interior range for walls and ceilings offers two main categories of technical natural wood panels, all of which require no specific maintenance apart from normal cleaning.

NATURPANEL-W is designed for environments subject to high levels of traffic and abrasion, such as museums, offices, hotels or institutional buildings.

NATURHARDPANEL-W is highly water resistant, perfect for installing in moisture rich environments such as bathrooms, gyms, saunas and swimming pools.







## The beauty of natural wood, without specific maintenance

Parklex Prodema has proprietary resin-based technology to protect the wood from Day 1, making it appropriate for continued use. No other maintenance (such as sanding, lacquering, oiling etc.) other than simple cleaning is ever required.

## Reaction to fire

NATURPANEL-W and NATURHARDPANEL-W have achieved the highest level of test results for organic materials, as per the stringent requirements of European Standard EN 13.501-1, reaction to fire:

NATURHARDPANEL-W: B-s1,d0  
NATURPANEL-W: B-s2,d0

## Resistance to scratching

All products within our wall and ceiling range achieved Level 3 for scratch-resistance, according to standard EN 438-2 section 25.

## Light fastness

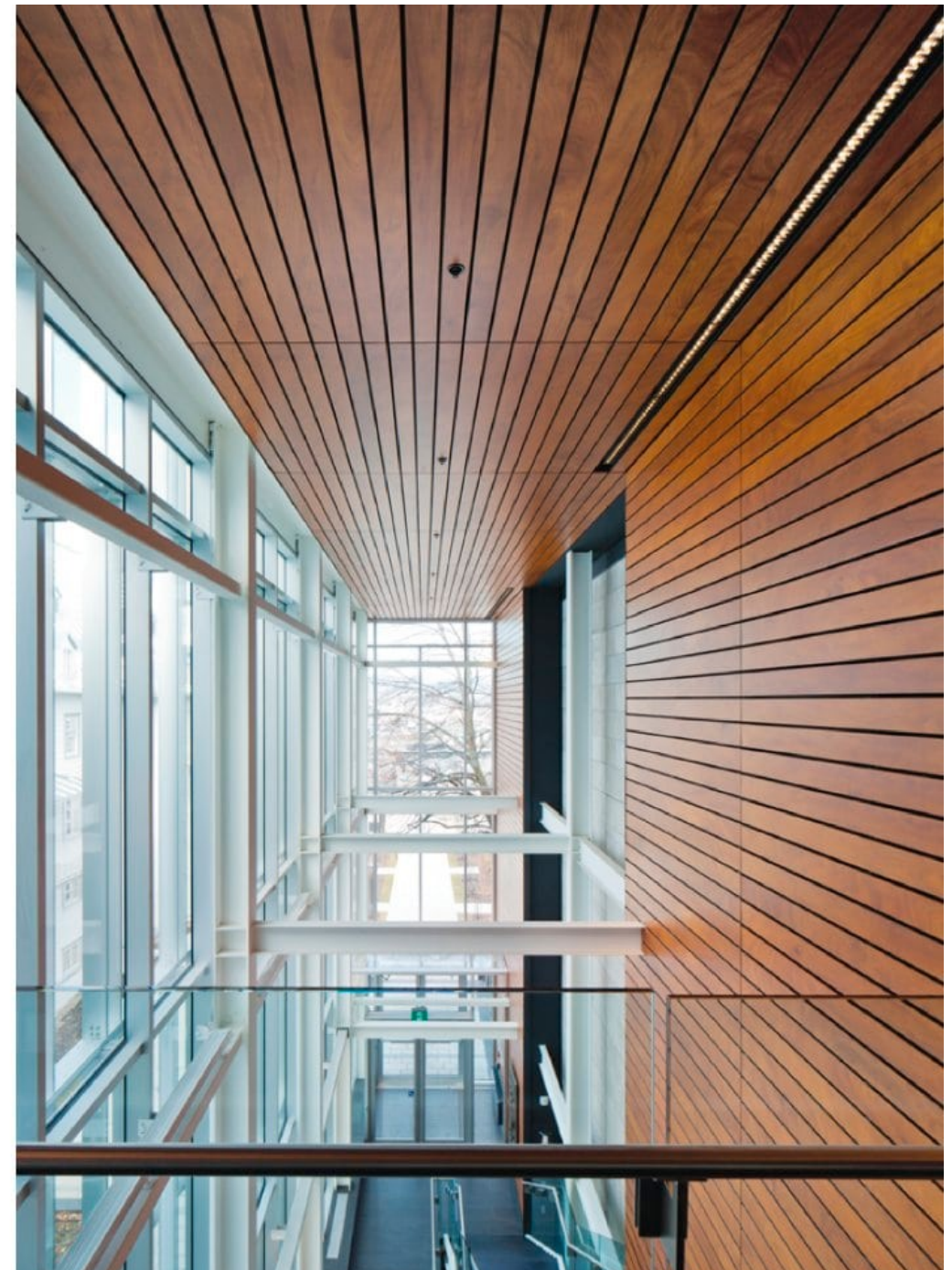
A minimum of Level  $\geq 2$  in the greyscale was achieved by all wall and ceiling products, as per the requirements of EN 438-2 section 27.

## Antibacterial

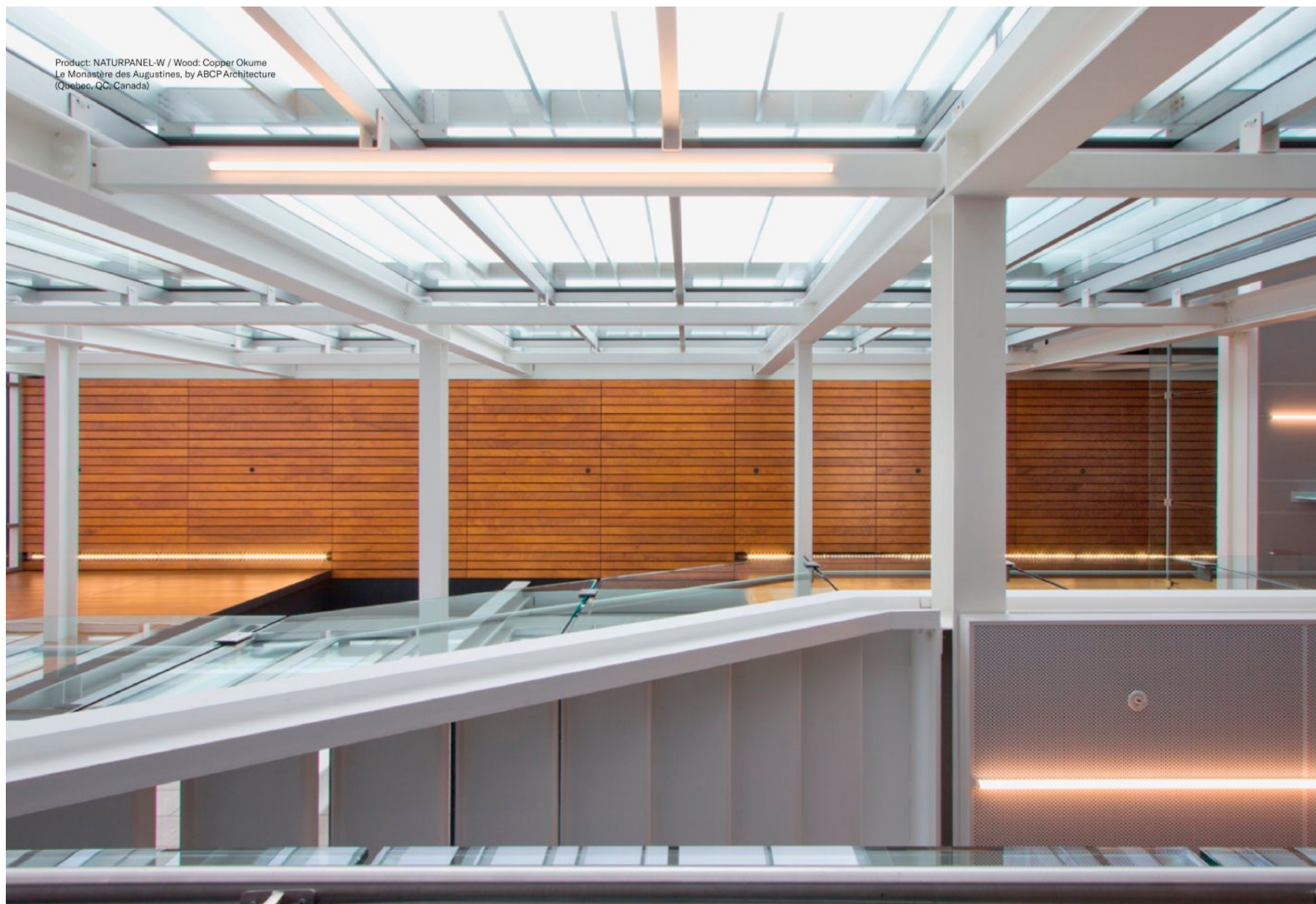
The entire range of wall and ceiling products can be supplied with high level antibacterial characteristics (based on standard ISO 22196:2007), upon request.

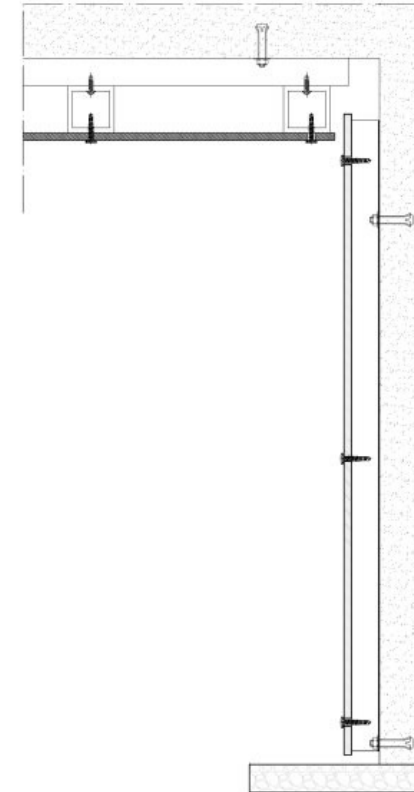
## Sound absorption

Our natural wood coverings can be adapted for use in areas requiring specific sound absorption characteristics. Tests conducted to measure sound absorption in a reverberation chamber obtained weighted coefficient between 0.2 and 0.6, depending on the perforation detail.







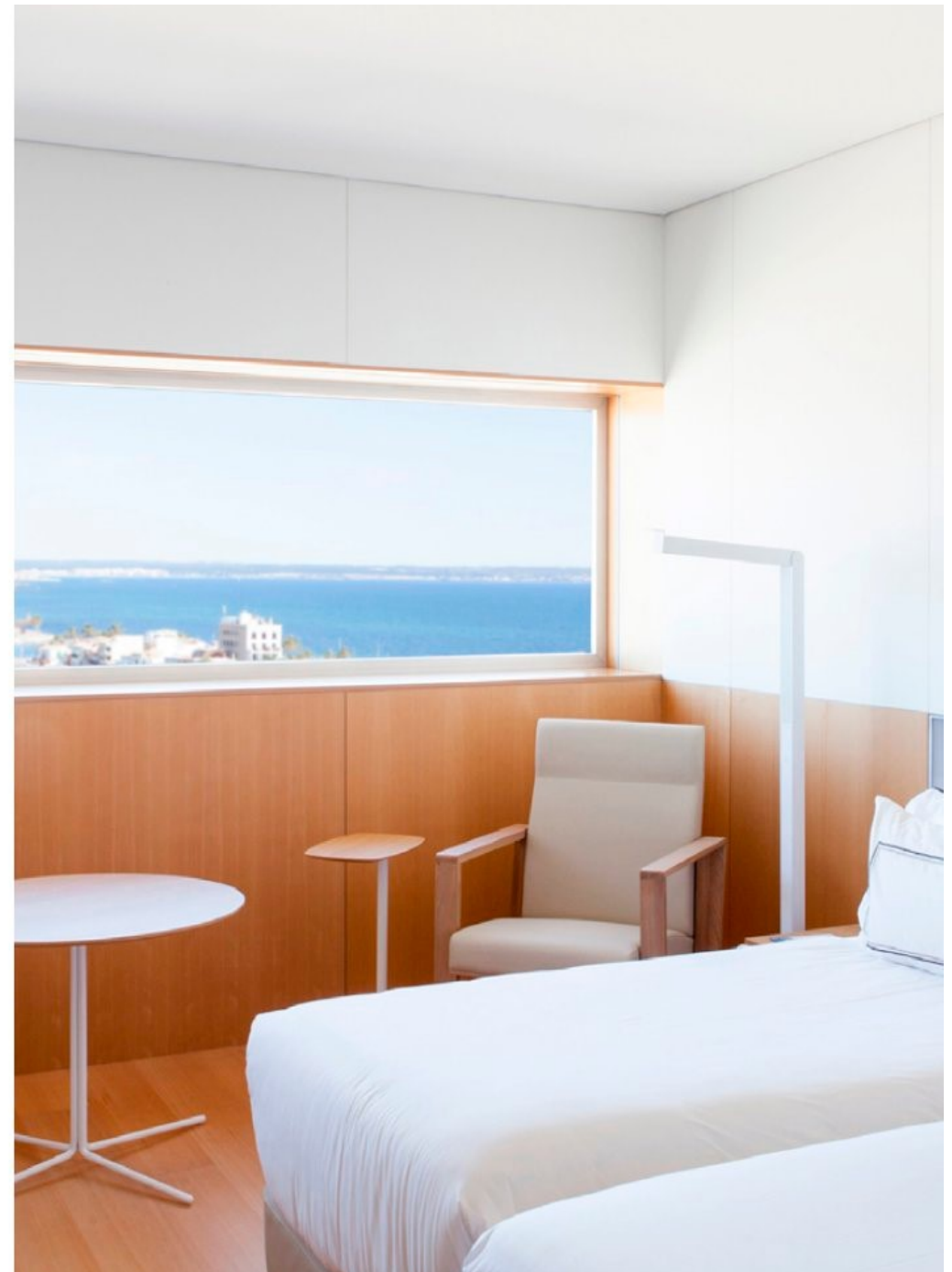


NATURPANEL-W and NATURHARDPANEL-W boards were specifically designed for internal wall and ceiling installations, where the wood offers the unique warmth, tone and grain of a living, organic material.

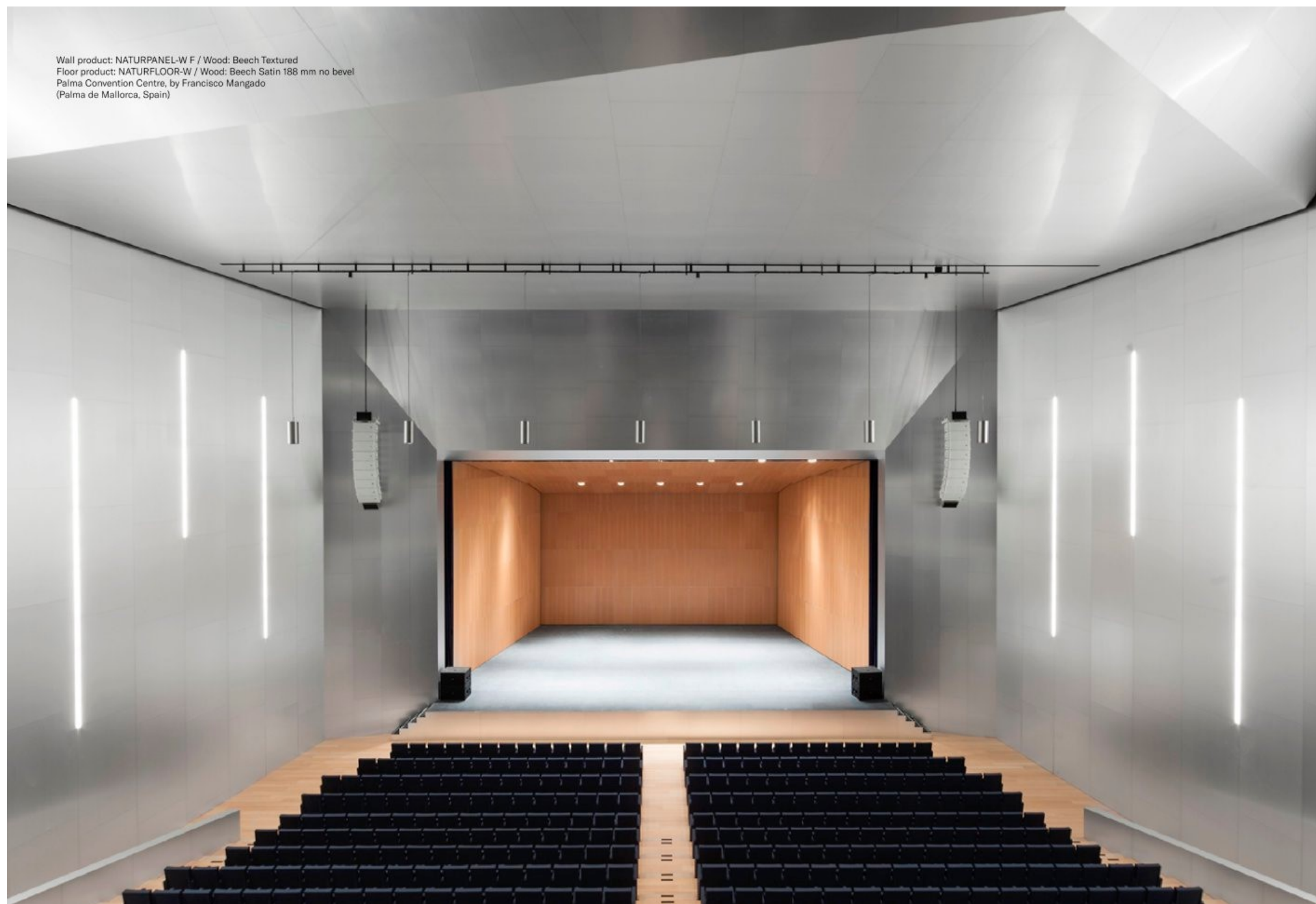




Wall product: NATURPANEL-W F / Wood: Beech Textured  
Floor product: NATURFLOOR-W / Wood: Beech Satin 188 mm no bevel  
Palma Convention Centre, by Francisco Mangado  
(Palma de Mallorca, Spain)

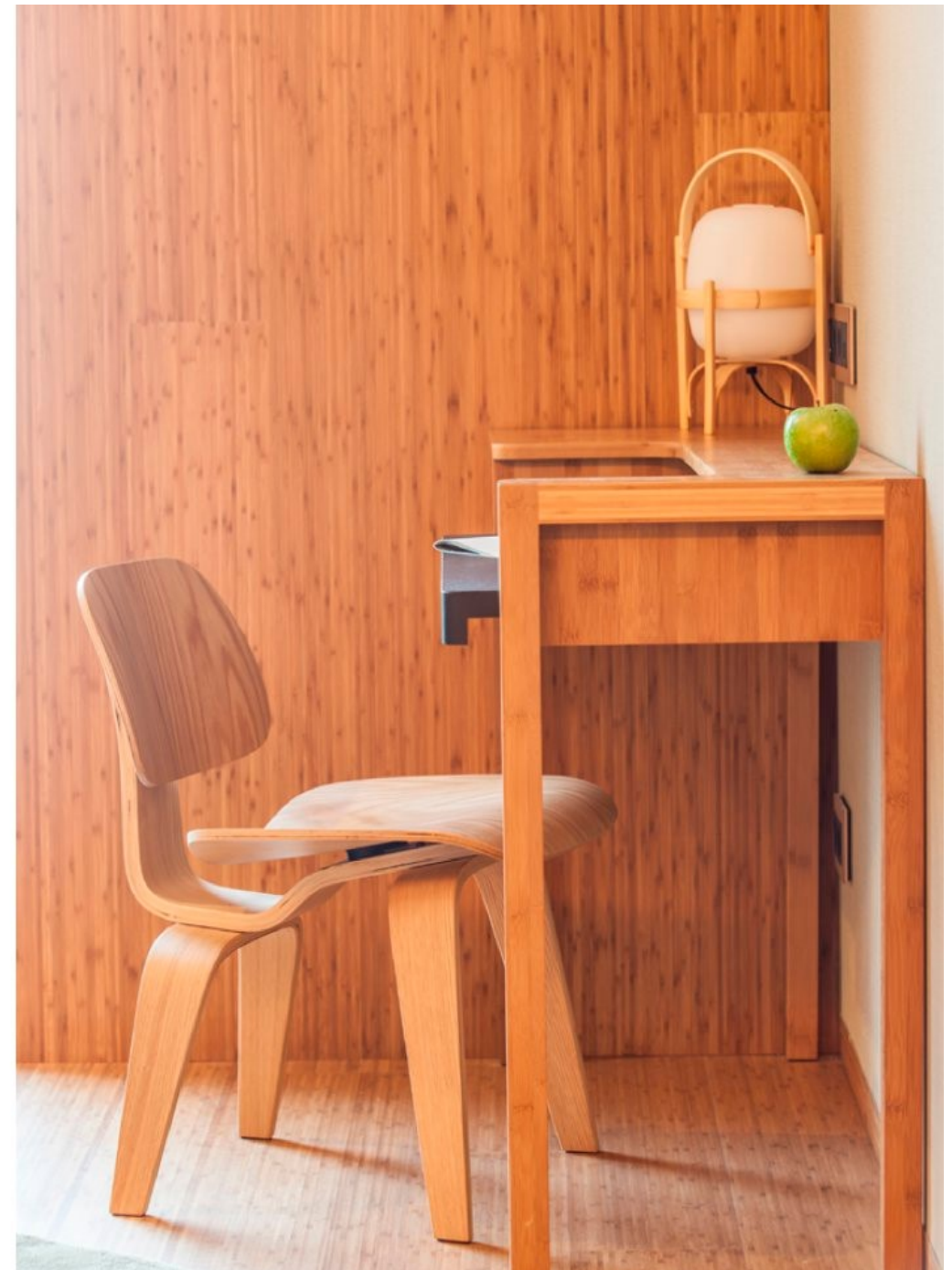




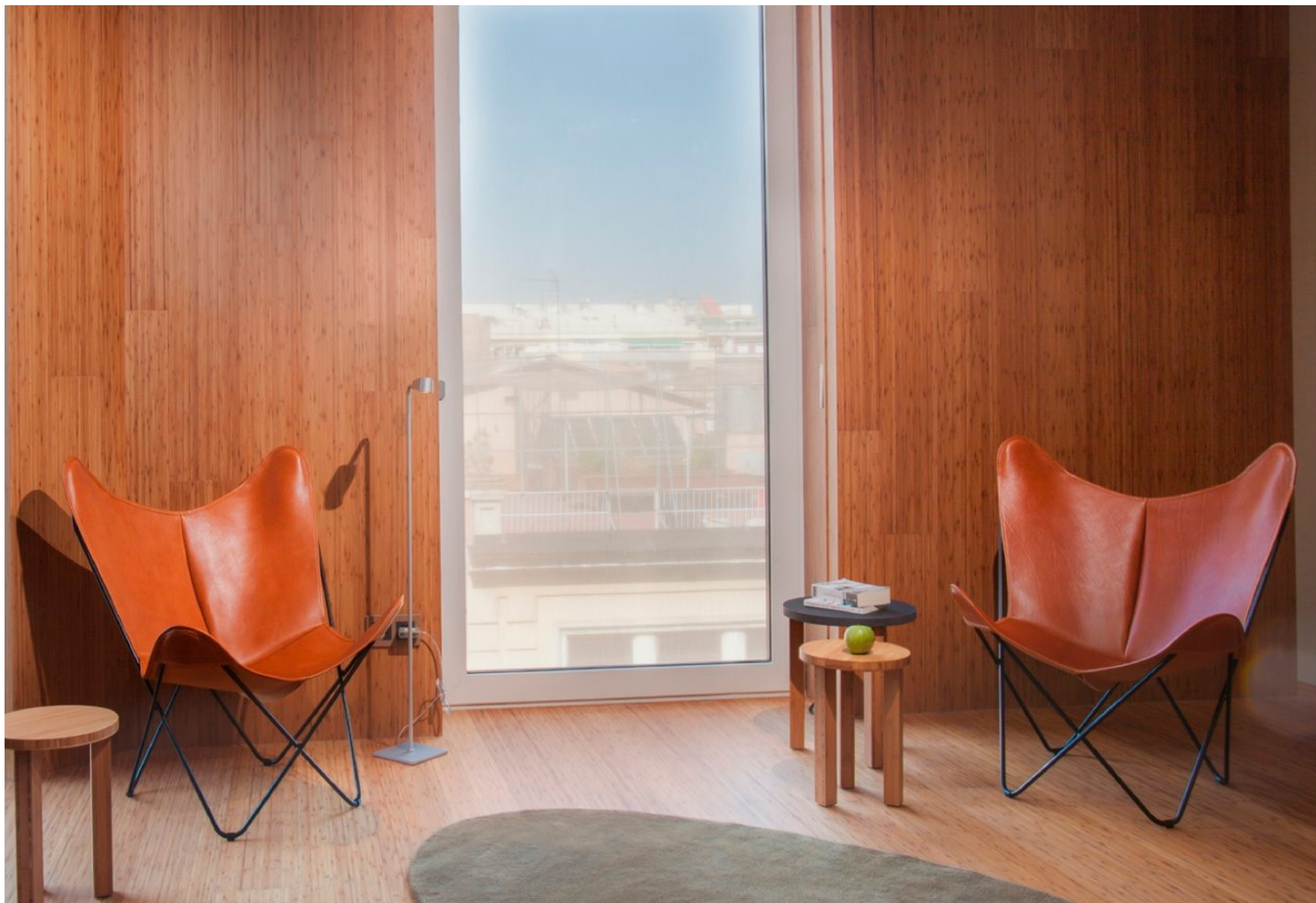




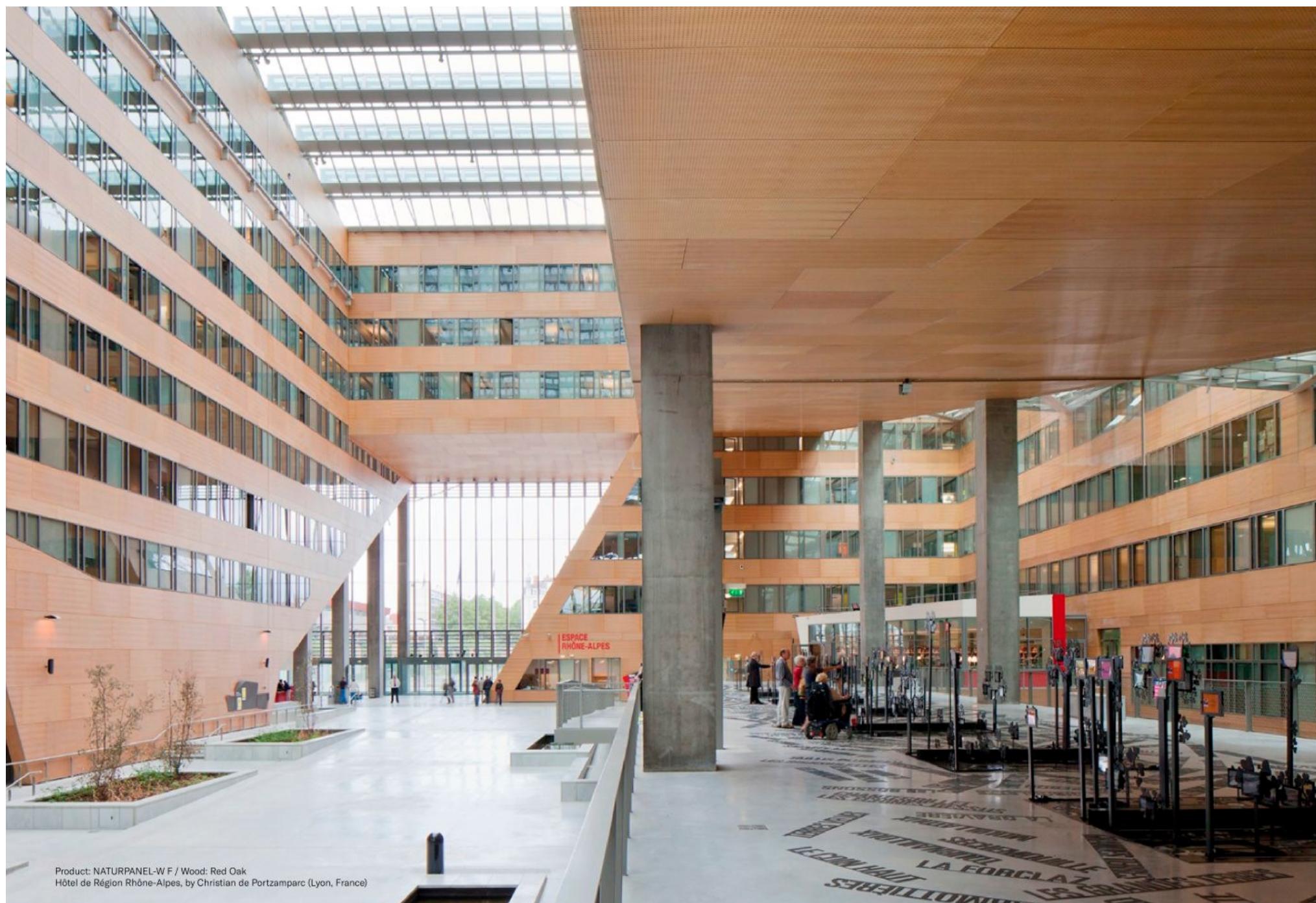
Wall product: NATURPANEL-W F / Wood: Caramel Bamboo Textured  
Floor product: NATURFLOOR-W / Wood: Caramel Bamboo Satin 188 mm no bevel  
Hotel OD Barcelona, by Victor Rahola Aguadé (Barcelona, Spain)













Our wall and ceiling products are available in 17 wood species. The Textured surface provides a slight satin appearance, providing the physical sensation of the grain and knots in the original wood veneer.

Wood is a natural product; therefore, each veneer must be considered as unique. Slight differences in colour, grain and structure is completely normal. Peculiarities such as knots or resin inclusions are not defects and should always be considered as part of the decoration. Depending on the species and origin of the wood, there are differences in light fastness behaviour. For this reason, no claims will be accepted based on differences/changes in tone between the sample and the final product.



Caramel Bamboo

NATURPANEL-W / NATURHARDPANEL-W



Bamboo

NATURPANEL-W / NATURHARDPANEL-W



Country Oak

NATURPANEL-W / NATURHARDPANEL-W



American Oak

NATURPANEL-W / NATURHARDPANEL-W



Rustic Oak

NATURPANEL-W / NATURHARDPANEL-W



Sand Oak

NATURPANEL-W / NATURHARDPANEL-W



Beech

NATURPANEL-W / NATURHARDPANEL-W



Maple

NATURPANEL-W / NATURHARDPANEL-W



Olivier Ash

NATURPANEL-W / NATURHARDPANEL-W



Eucalyptus

NATURPANEL-W / NATURHARDPANEL-W



European Ash

NATURPANEL-W / NATURHARDPANEL-W



Nordic Ash

NATURPANEL-W / NATURHARDPANEL-W



Driftwood

NATURPANEL-W / NATURHARDPANEL-W



Grey Quercus

NATURPANEL-W / NATURHARDPANEL-W



American Walnut

NATURPANEL-W / NATURHARDPANEL-W



Rustic Walnut

NATURPANEL-W / NATURHARDPANEL-W



Graphite

NATURPANEL-W / NATURHARDPANEL-W



## NATURPANEL-W

Highly resistant and tough, NATURPANEL-W is the premier natural wood cladding for internal walls and ceilings. Specifically designed for areas subject to high levels of abrasion. Zero maintenance, apart from washing.

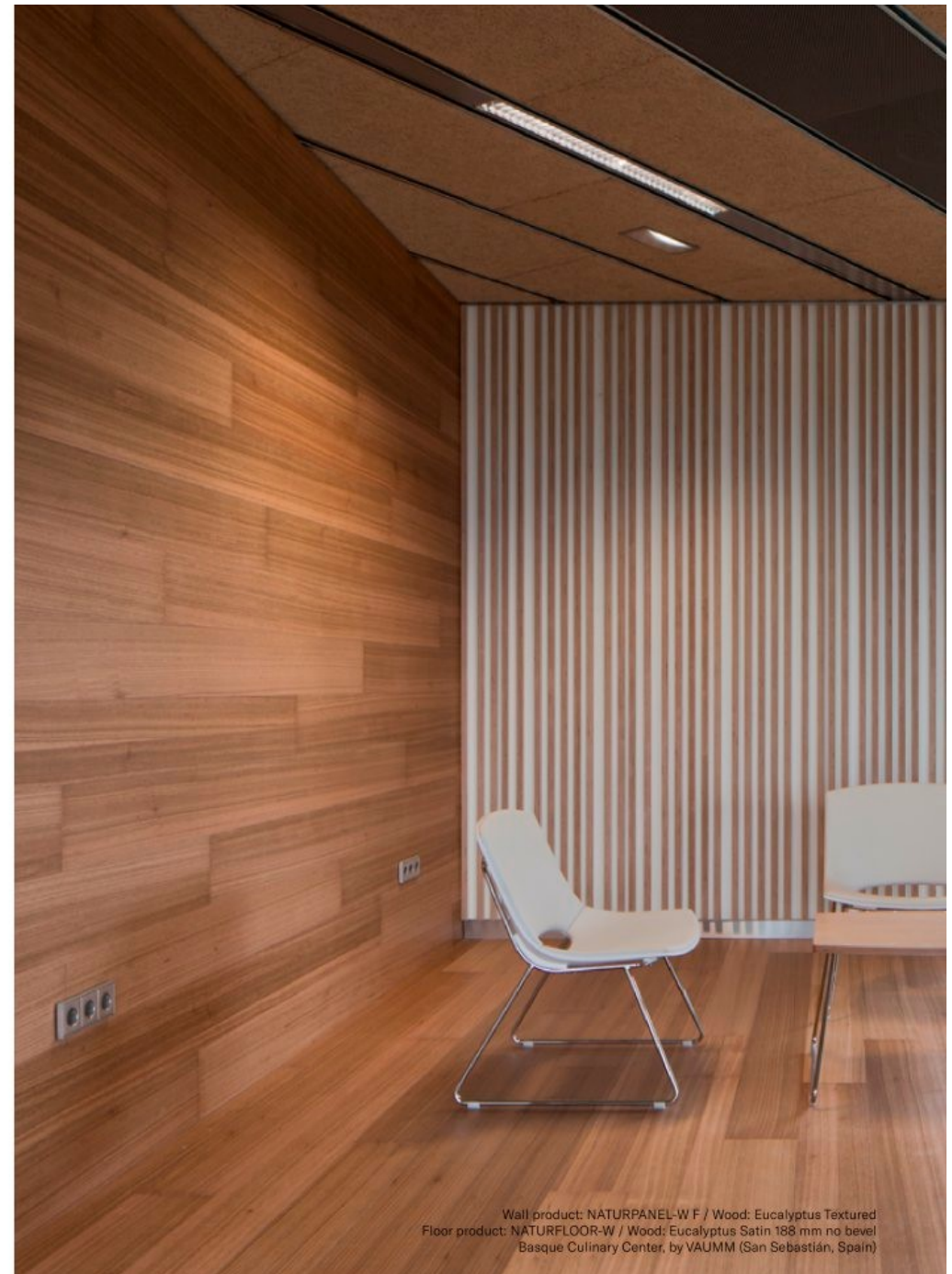


- A - Natural processed wood veneer
- B - Beech plywood (NATURPANEL-W S<sup>1</sup>)
- Poplar plywood (NATURPANEL-W F<sup>2</sup>)
- C - Rear Bakelite balancer

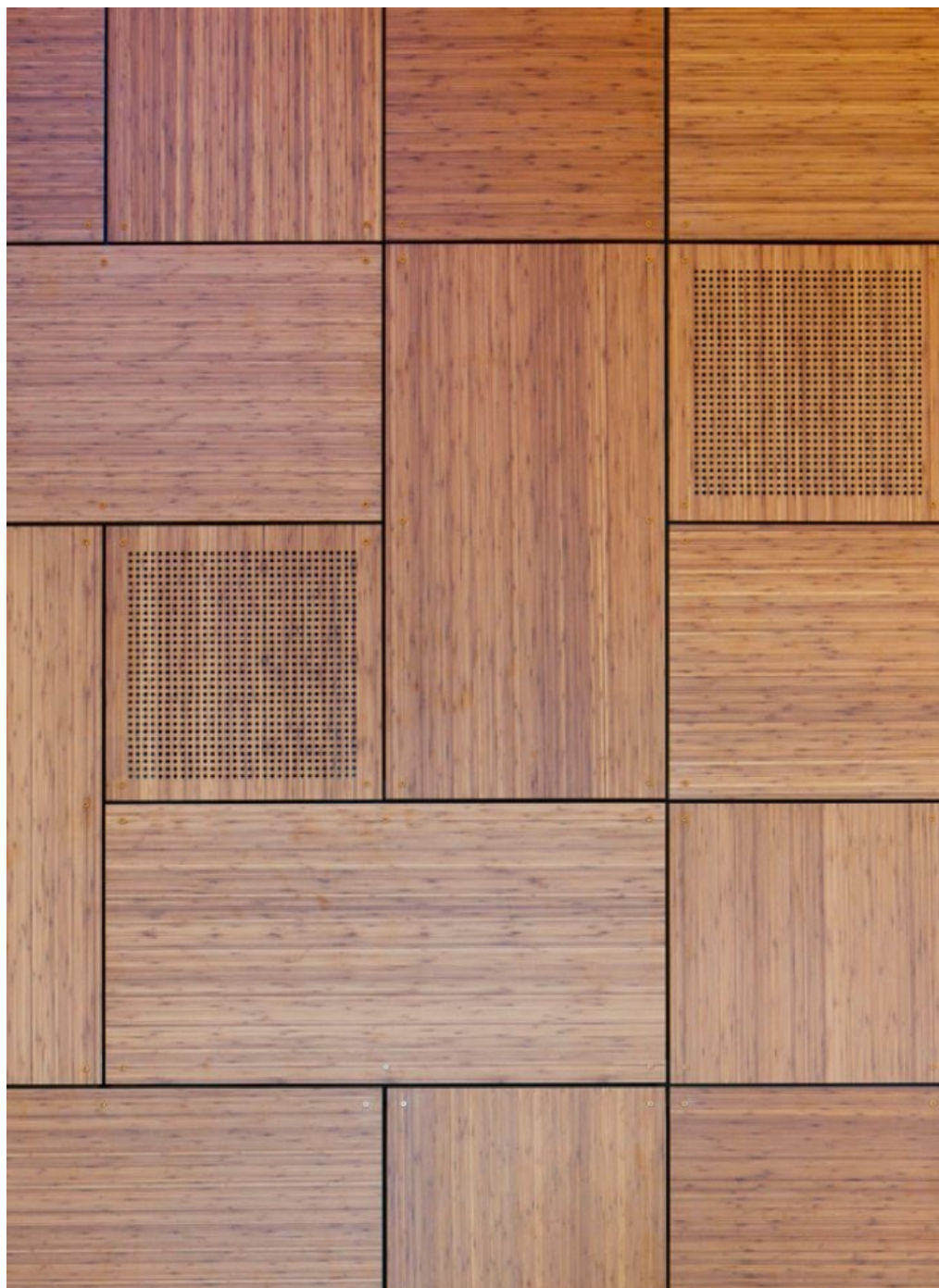
Dimensions: 2440 x 1220 mm

<sup>1</sup> NATURPANEL-W S is the standard board type / Thicknesses: 8, 11, 14, 17, 20 and 26 mm

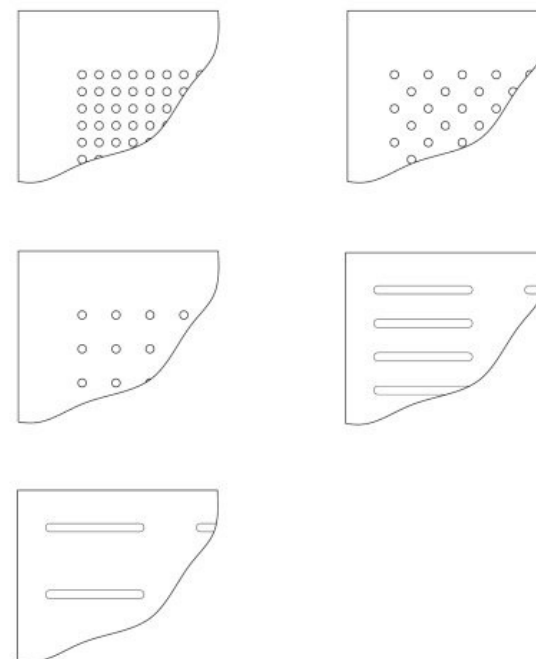
<sup>2</sup> NATURPANEL-W F is the fire-resistant variety / Thicknesses: 14, 17, 20 and 26 mm



Wall product: NATURPANEL-W F / Wood: Eucalyptus Textured  
Floor product: NATURFLOOR-W / Wood: Eucalyptus Satin 188 mm no bevel  
Basque Culinary Center, by VAUMM (San Sebastián, Spain)



Our boards can be adapted for projects that require specific sound absorption characteristics, such as convention halls, auditoriums, lecture halls and theatres.

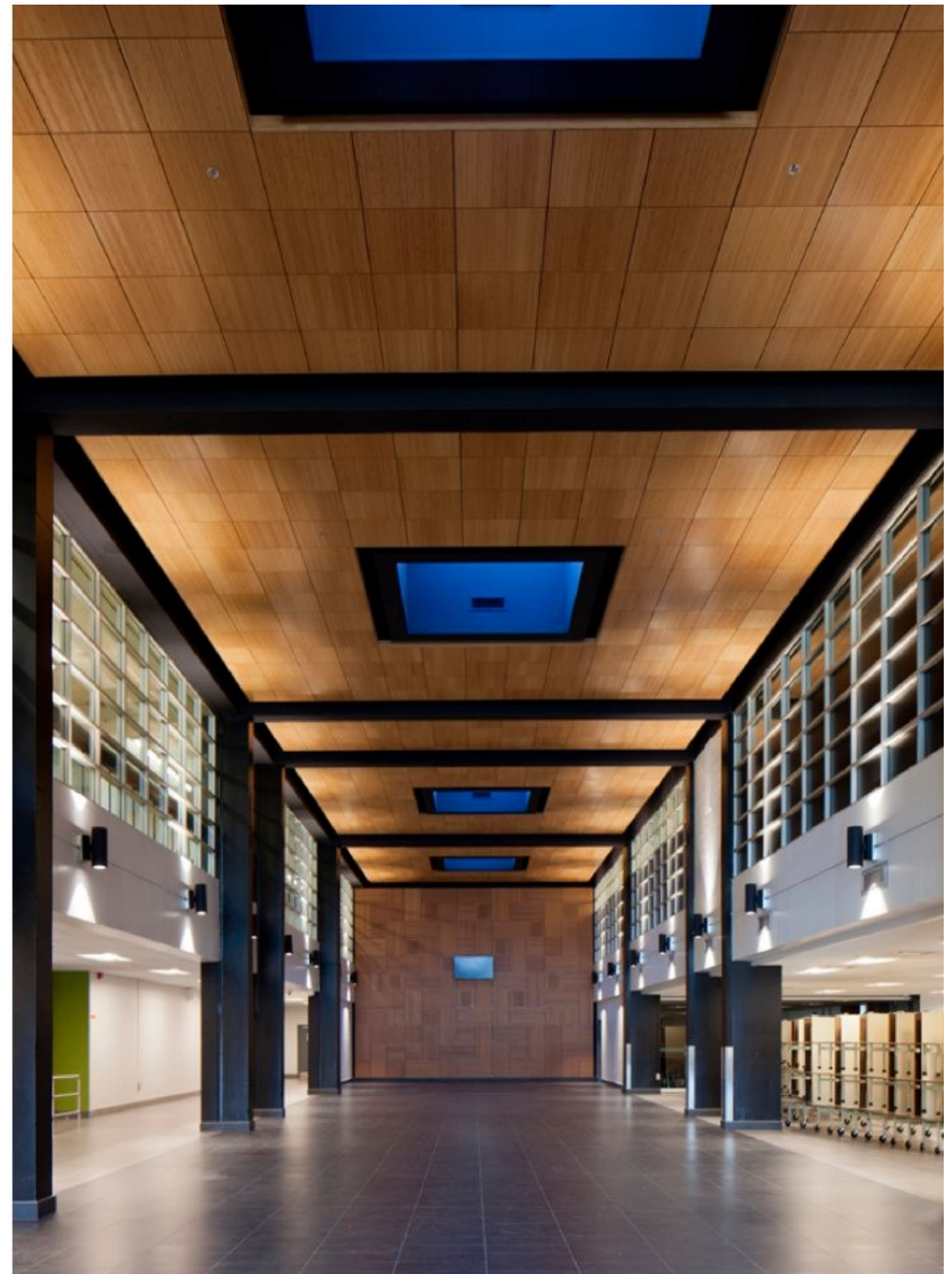


For more information, please contact your local representative or the technical department at Parklex Prodema.





Products: NATURPANEL-W F / Wood: Caramel Bamboo  
Ecole secondaire d'Anjou (Montréal, QC, Canada)



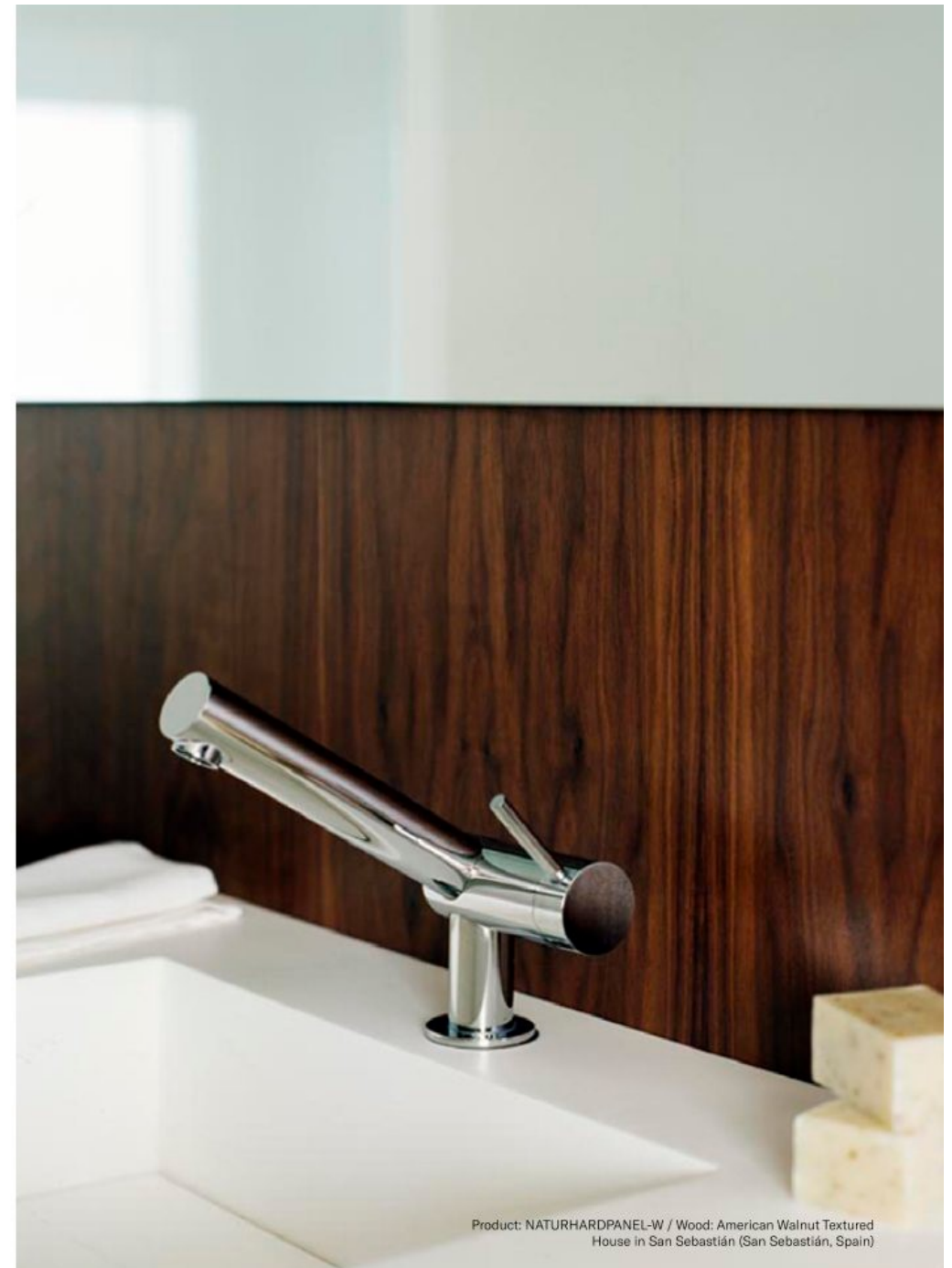
## NATURHARDPANEL-W

Thanks to the technical leak-tightness and damp-resistant properties of the natural wood's veneer, NATURHARDPANEL-W gives a special feeling of warmth in indoor environments that are frequently in contact with water.



A – Damp-resistant layer  
B – Natural wood veneer  
C – HPL core  
D – Protective film on rear

Dimensions: 2440 x 1220 mm / Thicknesses: 6\*, 8, 10, 12, 14, 16, 18, 20 and 22 mm  
\*Thickness only valid for pre-curved panels. For more information, please see our Walls and Ceilings technical guide.



Product: NATURHARDPANEL-W / Wood: American Walnut Textured  
House in San Sebastián (San Sebastián, Spain)





## NATURPANEL-W S

Tests	Standard	Unit of measurement	Result
			Parklex Prodema Ref: FTPNATURPANEL-WS (Standard) Rev: 09 (09.2021)
1. Inspection requirements			
Colour, pattern and surface finish	EN 438-8 Part 5.2.2.3	Due to the fact that wood is a natural product, each veneer must be considered as unique. The presence of slight differences in colour and structure is normal. Peculiarities such as knots or resin inclusions are not considered to be defects, but as part of the decoration. Depending on the species and the source of the wood, differences in performance may be observed, as regards the colour's light fastness.	
2. Dimensional tolerances			
Thickness (t)	EN 438-2 Part 5	mm	+1,6 / -1 (t=8) +1,4 / -1,1 (t=11) +1,6 / -1,1 (t=14) +1,3 / -1,3 (t=17) +1,3 / -1,1 (t=20) +1,3 / -1,1 (t=26)
Tolerance for thickness variations inside a panel	EN 315:1993	mm	± 0,6
Length and width	EN 438-2 Part 6	mm	+10 / -0
Edge straightness	EN 438-2 Part 7	mm/m	1,5
Squareness	EN 438-2 Part 8	mm/m	1,5
3. Physical properties			
Resistance to surface wear	EN 438-2 Part 10	Revolutions Wear resistance	- ≥ 350
Resistance to immersion in boiling water	EN 438-2 Part 12	Delamination Pass / Fail	Pass
Resistance to scratching	EN 438-2 Part 25	Rating	3
Lightfastness (xenon arc)	EN 438-2 Part 27	Grey scale rating	≥ 2 (A)
Flexural strength	EN 310	MPa	≥ 70 (Longrain) ≥ 60 (Crossgrain)
Flexural modulus	EN 310	MPa	≥ 7.000 (Longrain) ≥ 6.000 (Crossgrain)
Perpendicular tensile strength	ASTM C 297	MPa	≥ 2
Density	-	g/cm³	≥ 0,75
4. EC Safety requirements			
Reaction to fire	EN 13.501-1	Classification	D-s2,d0
Resistance to fixings	EN 438-7 Part 4.5	N/mm N	≥ 150 (t < 15 mm) ≥ 2.000 (t ≥ 15 mm)
Bonding strength	EN 438-7 Part 4.7	MPa	≥ 1
Flexural tensile strength	EN 438-7 Part 4.8	MPa	≥ 1
Content of pentachlorophenol	EN 438-7 Part 4.10	ppm	≤ 5
Release of formaldehyde	EN 717-2	Class	E1
Glue-line quality	EN 438-7 Part 4.13.3	Rating	5
Resistance to elevated temperature	EN 438-7 Part 4.13.3	Result	No damage
Water resistance	EN 438-7 Part 4.13.3	%	≤ 7
5. Additional requirements upon request			
Evaluation of antimicrobial activity	ISO 22196 (JIS Z 2801)	% reduction after 24h (S. aureus and E. coli)	99,99

## NATURPANEL-W F

Tests	Standard	Unit of measurement	Result
1. Inspection requirements			Parklex Prodema Ref: FTPNATURPANEL-WF (Fire-resistant) Rev: 10 (11.2021)
Colour, pattern and surface finish	EN 438-8 Part 5.2.2.3	Due to the fact that wood is a natural product, each veneer must be considered as unique. The presence of slight differences in colour and structure is normal. Peculiarities such as knots or resin inclusions are not considered to be defects, but as part of the decoration. Depending on the species and the source of the wood, differences in performance may be observed, as regards the colour's light fastness.	
2. Dimensional tolerances			
Thickness (t)	EN 438-2 Part 5	mm	+1,3 / -0,9 (t=14) +1,4 / -1,0 (t=17) +1,6 / -1,2 (t=20) +1,6 / -1,2 (t=26)
Tolerance for thickness variations inside a panel	EN 315:1993	mm	≤ 0,6
Length and width	EN 438-2 Part 6	mm	+10 / -0
Edge straightness	EN 438-2 Part 7	mm/m	1,5
Squareness	EN 438-2 Part 8	mm/m	1,5
3. Physical properties			
Resistance to surface wear	EN 438-2 Part 10	Revolutions Wear resistance	- ≥ 350
Resistance to immersion in boiling water	EN 438-2 Part 12	Delamination Pass / Fail	Pass
Resistance to scratching	EN 438-2 Part 25	Rating	3
Lightfastness (xenon arc)	EN 438-2 Part 27	Grey scale rating	≥ 2
Flexural strength	EN 310	MPa	≥ 55 (Longrain) ≥ 45 (Crossgrain)
Flexural modulus	EN 310	MPa	≥ 6.000 (Longrain) ≥ 5.000 (Crossgrain)
Density	-	g/cm <sup>3</sup>	≥ 0,50
4. EC Safety requirements			
Reaction to fire	EN 13.501-1	Classification	B-s2,d0
Resistance to fixings	EN 438-7 Part 4.5	N/mm N	≥ 100 (t < 15 mm) ≥ 1.500 (t ≥ 15 mm)
Bonding strength	EN 438-7 Part 4.7	MPa	≥ 1
Flexural tensile strength	EN 438-7 Part 4.8	MPa	≥ 1
Content of pentachlorophenol	EN 438-7 Part 4.10	ppm	≤ 5
Release of formaldehyde	EN 717-2	Class	E1
Glue-line quality	EN 438-7 Part 4.13.3	Rating	5
Resistance to elevated temperature	EN 438-7 Part 4.13.3	Result	No damage
Water resistance	EN 438-7 Part 4.13.3	%	≤ 5
5. Additional requirements upon request			
Evaluation of antimicrobial activity	ISO 22196 (JIS Z 2801)	% reduction after 24h (S. aureus and E. coli)	99,99

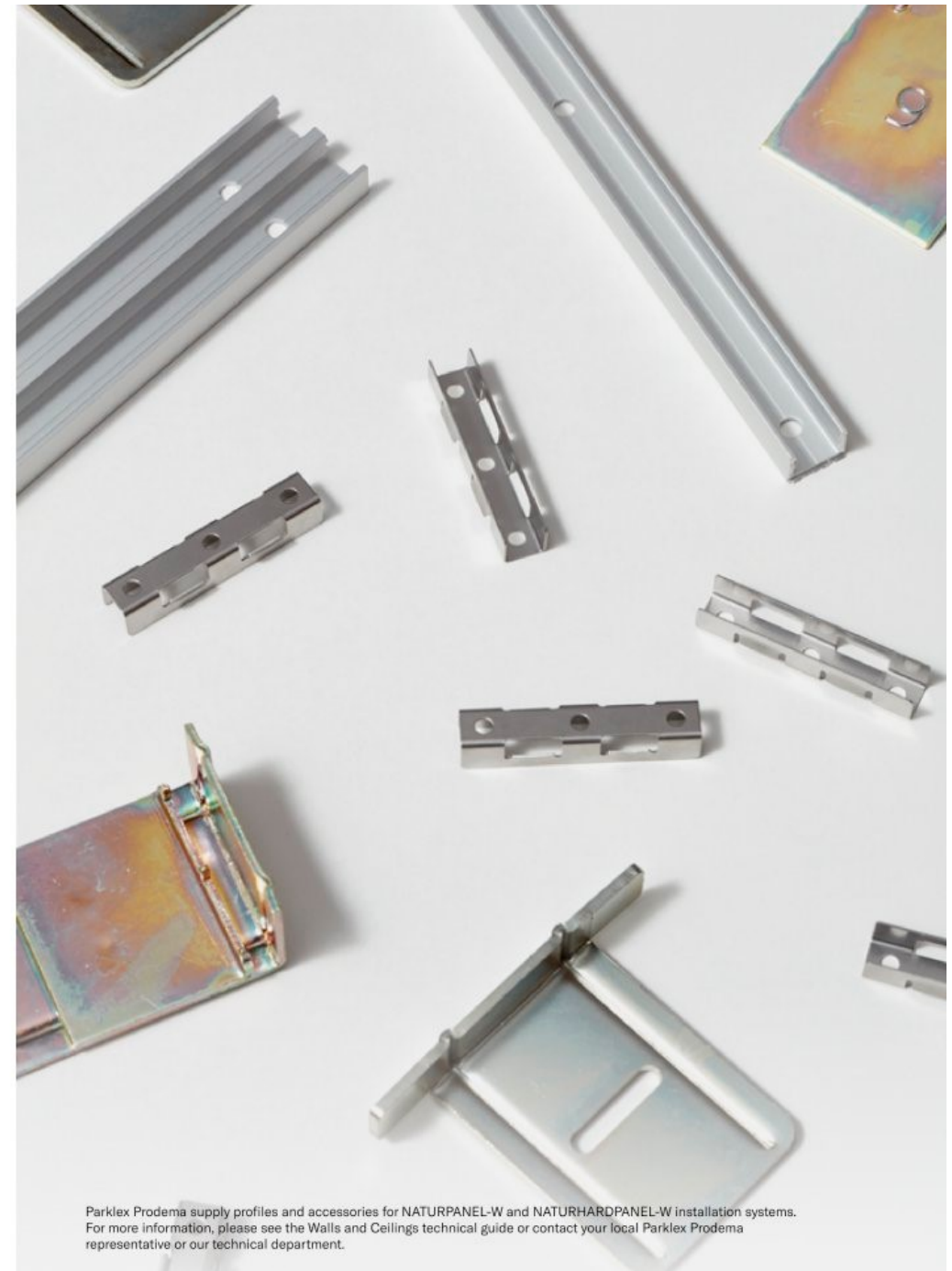


## NATURHARDPANEL-W

Tests	Standard	Property or attribute	Unit of measurement	Result
1. Inspection				Parklex Prodema NATURHARDPANEL-W F (Fire-resistant) Rev: 09 (02.2018)
Colour, pattern and surface finish	EN 438-8 Sect. 5.2.2.3	Due to the fact that wood is a natural product, each veneer must be considered as unique. The presence of slight differences in colour and structure is normal. Peculiarities such as knots or resin inclusions are not considered to be defects, but as part of the decoration. Depending on the species and the source of the wood, differences in performance may be observed, as regards the colour's light fastness.		
2. Dimensional tolerances				
Thickness (t)	EN 438-2 Sect. 5	8.0 ≤ t < 12.0 12.0 ≤ t < 16.0 16.0 ≤ t < 20.0 20.0 ≤ t < 25.0	mm	± 0.50 ± 0.60 ± 0.70 ± 0.80
Flatness (f)	EN 438-2 Sect. 9	6.0 ≤ t < 10.0 10.0 ≤ t	mm /m	8.0 5.0
Length and width	EN 438-2 Sect. 6		mm	+10 / -0
Edge straightness	EN 438-2 Sect. 7		mm/m	1.5
Squareness	EN 438-2 Sect. 8		mm/m	1.5
3. Physical properties				
Resistance to surface wear	EN 438-2 Sect. 10	Wear value	Revolutions	≥ 350
Resistance to scratching	EN 438-2 Sect. 25	Strength	Rating	3
Light fastness	EN 438-2 Sect. 27	Appearance	Greyscale degree	≥ 2 (2)
Dimensional stability	EN 438-2 Sect. 17	Accumulated dimensional variation ( t ≥ 6 mm )	Max longitudinal %	0.3
			Max transversal %	0.6
Resistance to impact	EN 438-2 Sect. 21	Drop height without mark above 10mm	mm	≥ 1,800
4. EC Safety requirements				
Water vapour permeability	EN 438-7 Sect. 4.4	Wet cup method	μ	110
		Dry cup method		250
Resistance to fixings	EN 438-7 Sect. 4.5	Strength t ≥ 8mm	N	> 3,000
		Strength t ≥ 10mm		> 4,000
Formaldehyde emission	EN 438-7 Sect. 4.11	Classification	Class	E1
Flexural strength	EN ISO 178	Longrain Crossgrain	MPa	≥ 80
Flexural elastic modulus	EN ISO 178	Longrain Crossgrain	MPa	≥ 9,000
Resistance to immersion in boiling water	EN 438-2 Sect. 12	Appearance	Delamination occurs/does not occur	Occurs
Density	EN ISO 1183	Density	g/cm³	≥ 1.35
5. EC Safety requirements - Reaction to fire				
Reaction to fire	EN 13.501-1	Euroclass t ≥ 8 mm	Classification	B-s1,d0
6. Optional features upon request				
Determination of anti-bacterial activity	ISO 22196 (JIS Z 2801)		% reduction after 24h ( S. aureus and E. coli )	99.99

<sup>\*)</sup> Providing the panels are stored according to the manner and conditions recommended by the manufacturer.

<sup>\*\*)</sup> Except Maple wood, which has a rating < 2



Parklex Prodema supply profiles and accessories for NATURPANEL-W and NATURHARDPANEL-W installation systems. For more information, please see the Walls and Ceilings technical guide or contact your local Parklex Prodema representative or our technical department.

EDITING & PRODUCTION  
PARKLEX PRODEMA

ART DIRECTION  
JAUME RAMÍREZ STUDIO

TEXT  
CHESCA GUIM

CORPORATE PHOTOGRAPHY  
MARÇAL VAQUER  
YOSIGO

PROJECT PHOTOGRAPHY  
JUAN RODRIGUEZ  
CARLOS GARMENDIA  
RAQUEL MARTÍNEZ  
JESUS MARTIN RUIZ  
AITOR ORTIZ

PRINTED IN BARCELONA  
BY AGPOGRAF



