

# HEALTHCARE.

**PARKLEX PRODEMA**

The use of wood in the construction of hospitals facilitates the recovery of patients: it reduces stress and improves people's mood.

“Wood has psychic effects on humans and reduces stress in the same way as nature in general”  
(Marjut Wallenius, PhD in psychology and professor at the University of Tampere).

# CONTENT.

## 01

REFERENCE PROJECTS.

## 02

MAIN FEATURES.

Continuity

Natural wood

Technology

Sustainable raw materials

Zero environment impact

## 03

OUR PRODUCTS.

NATURFLOOR-W

NATURHARDPANEL-W

NATURSKININT-W

NATURCLAD-W | NATURCLAD-B

NATURSOFFIT-W

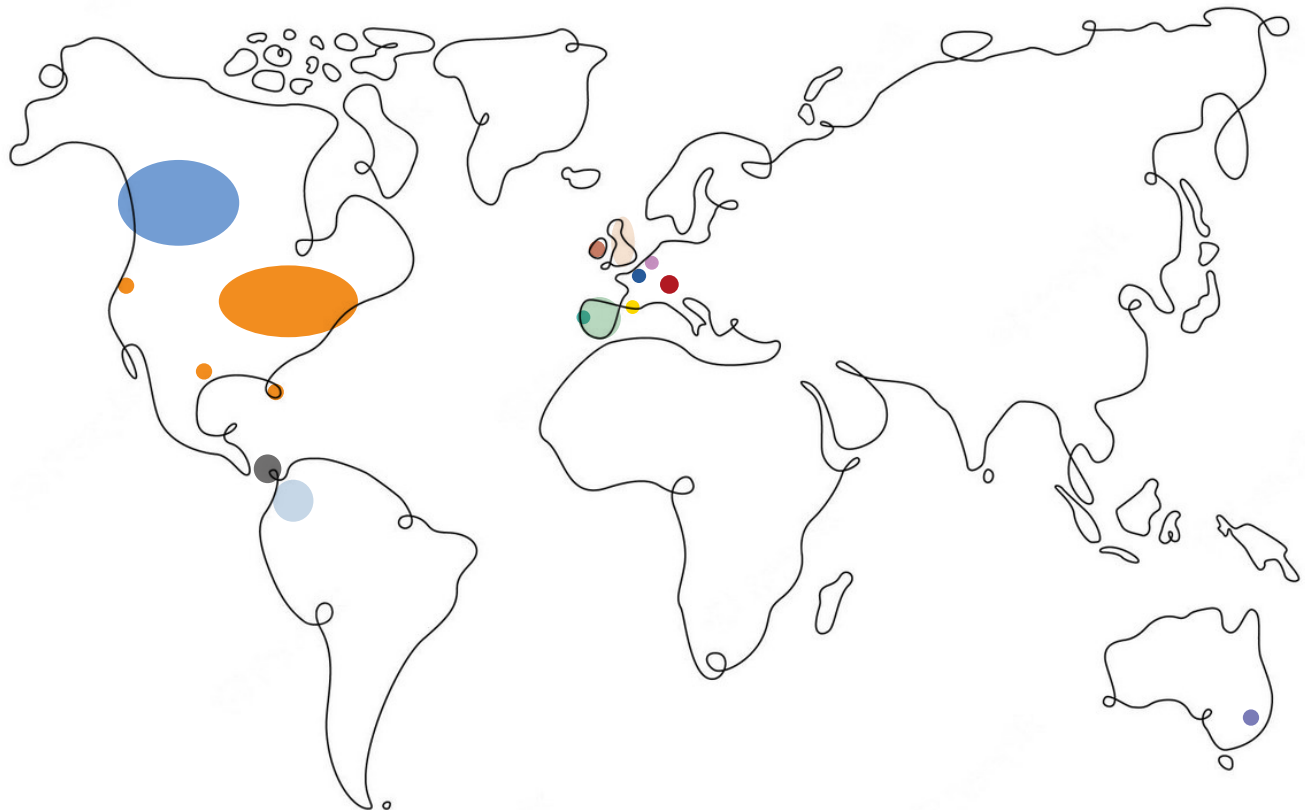
NATURSIDING-W | NATURSIDING-B

# REFERENCE PROJECTS.

PARKLEX PRODEMA has extensive experience supplying panels for applications in many countries all over the world.

- Caudwell Children Centre (England)
- National Forensic Mental Health Services Hospital (Dublin | Ireland)
- Hospital of Barcelona (Barcelona | Spain)
- SJD Sant Joan de Deu Pediatric Cancer Center Barcelona (Barcelona | Spain)
- St Esteve Sesrovires Ambulatory (Barcelona | Spain)
- Nova Aliança Clinic (Lleida | Spain)
- Hospital of Valdecilla (Valdecilla | Spain)
- UNEA Multidisciplinary Clinic (Errenteria | Spain)
- Onkologikoa [cancer center] (Donostia - San Sebastian | Spain)
- Hospital of Donostia (Donostia - San Sebastian | Spain)
- Urduliz Hospital (Urduliz | Spain)
- San Juan Older Center (Valladolid | Spain)
- Pombaldial - Dialysis Clinic Lda (Pombal | Portugal)
- Grau du Roi University Hospital (CHU Nîmes | France)
- Castres Hospital Center (Castres | France)
- Clinique du Grand-Saleve (Veyrier | Switzerland)
- CIO Unilab (CHU Lieje) (Lieje | Belgium)
- Leipzig Animal Clinic (Leipzig | Germany)
- Giessen University Hospital (Glessen | Germany)
- Gerontological Home HG (Bogotá | Colombia)
- HOPE Clinic (Panama)
- Vanbrugh Physiotherapy Clinic (England | United Kingdom)
- The Vale Clinic (Welsh | United Kingdom)
- Adamson Hospital (Scotland | United Kingdom)
- Watson Lake Hospital (Yukon | Canada)
- Hospital Conmemorativo de Surrey (Surrey | Canadá)
- Winnipeg Humane Society (Winnipeg | Canada)
- Hope Center - Lions Gate Hospital (North Vancouver | Canada)
- Blacktown Hospital (Blacktown | Australia)

- Virtua Hospital (Vorhees | USA)
- Providence Park Hospital (Vorhees | USA)
- Seattle Orthopedic Center (Washington | USA)
- Life Source (Minneapolis | Minnesota | USA)
- Cincinnati Children's Hospital (Ohio | USA)
- Owensboro Hospital (Kentucky | USA)
- Johnson County Ambulance Service (Iowa | USA)
- Moffit Cancer Center (Florida | USA)
- Richard M. Schulze Family Foundation American Cancer Society, Hope Lodge (Texas | USA)



St. Esteve Sesroviros Ambulatory (Barcelona | Spain)



Hospital of Valdecilla (Valdecilla | Spain)



Hospital of Barcelona (Barcelona | Spain)





Richard M. Schulze Family Foundation American Cancer Society, Hope Lodge (Texas | USA)



Gerontological Home HG (Bogotá | Colombia)



Life Source (Minneapolis | Minnesota | USA)



Moffit Cancer Center (Florida | USA)

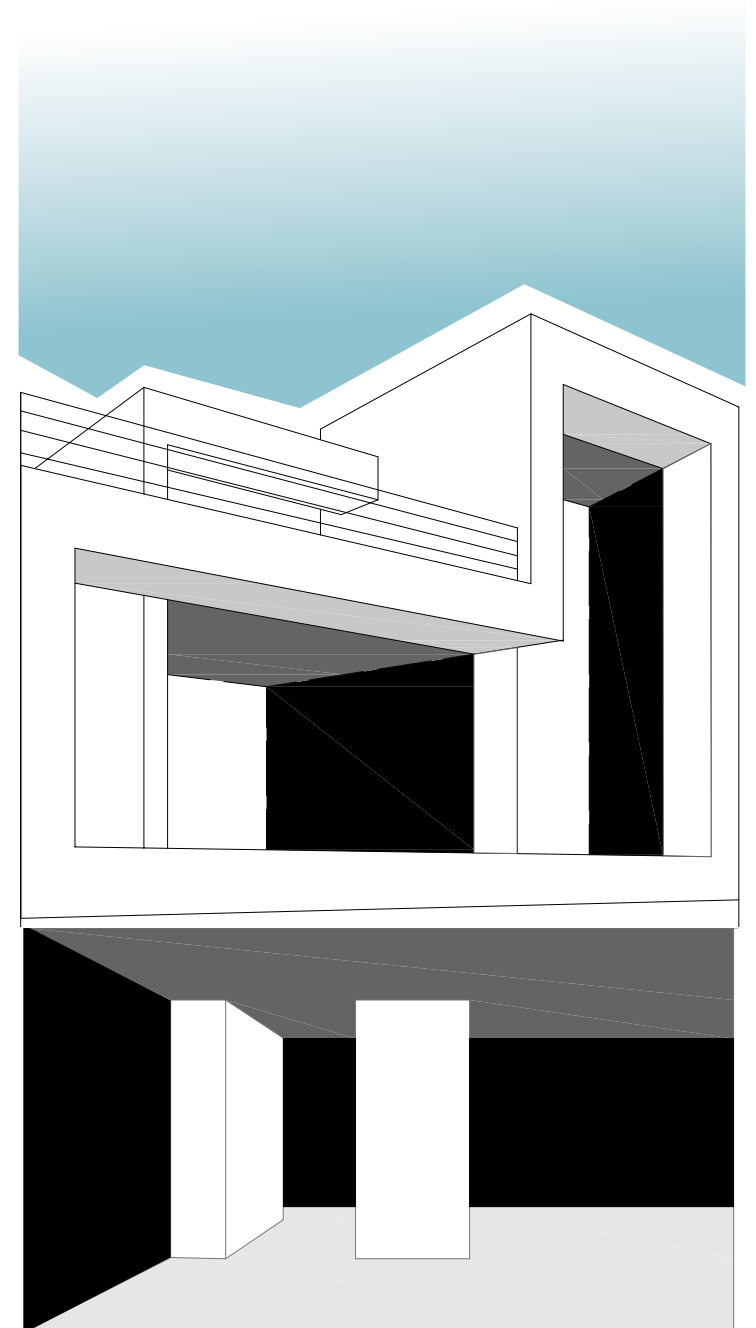


# MAIN FEATURES.

## Continuity.

Architects are provided the possibility of matching interior walls and ceilings with the soffit, creating a feeling of continuity both inside and out. They can also match the interior floor with interior walls and ceilings -as well as with the furniture-, creating a feeling of continuity within the same space.

- SOFFIT 
- INTERIOR WALLS 
- INTERIOR CEILINGS 
- INTERIOR FLOOR 



**IMPROVES THE WELL-  
BEING IN HOSPITALS  
AND HUMANIZES  
SPACES.**

## Natural wood.

- > Provides warmth and comfort to spaces.
- > Contributes to improving the well-being of those admitted to hospitals, and of health personnel.
- > Humanizes spaces (especially where we don't like to be..).
- > Offers a great diversity of design options (range of wood species) and coordinates adequately with all types of materials (coexists harmoniously).
- > Wood for all types of coatings and applications -versatility-, ensuring perfect aesthetic coordination: floors, walls, ceilings, doors, furniture, wet areas and areas in contact with water, areas high traffic, soffits, etc.
- > Wood is a noble material, which brings prestige and increases the status of the project.
- > Wood to design projects that convey the quality of the service offered by the client.







**NATURAL WOOD**  
**WHERE IT IS NOT**  
**CONSIDERED**  
**SUITABLE.**

## Technology.

PARKLEX PRODEMA's own technology that contributes to improving the performance of the wood. Natural wood where the use of wood is not considered suitable.



Natural Wood



Maintenance-free



Unique



Moisture-resistant



Fire safety



Antibacterial surface



Stain resistant



Easy to clean



Suitable for hydroalcohol and hydrogel



Light fastness



Scratch-resistant



Impact resistant



Wear-resistant



Sound absorption



Can be perforated



Clean Air Gold Certificate



PEFC Certificate



FSC Certificate



Indoor Advantage  
Air Gold Certificate



Installation versatility



Continuity

**WE PURCHASE  
SUSTAINABLE FOREST  
PRODUCTS .**

## Sustainable raw materials.

With PARKLEX PRODEMA's products, raw forest materials are an important part of the product. Aware of the importance that forest masses have for development of life on the planet, and to limit the greenhouse effect, we believe in purchasing sustainable forest products. Maintaining forests with controlled, appropriate felling helps to maintain biodiversity and the recovery capacity of the forests themselves.

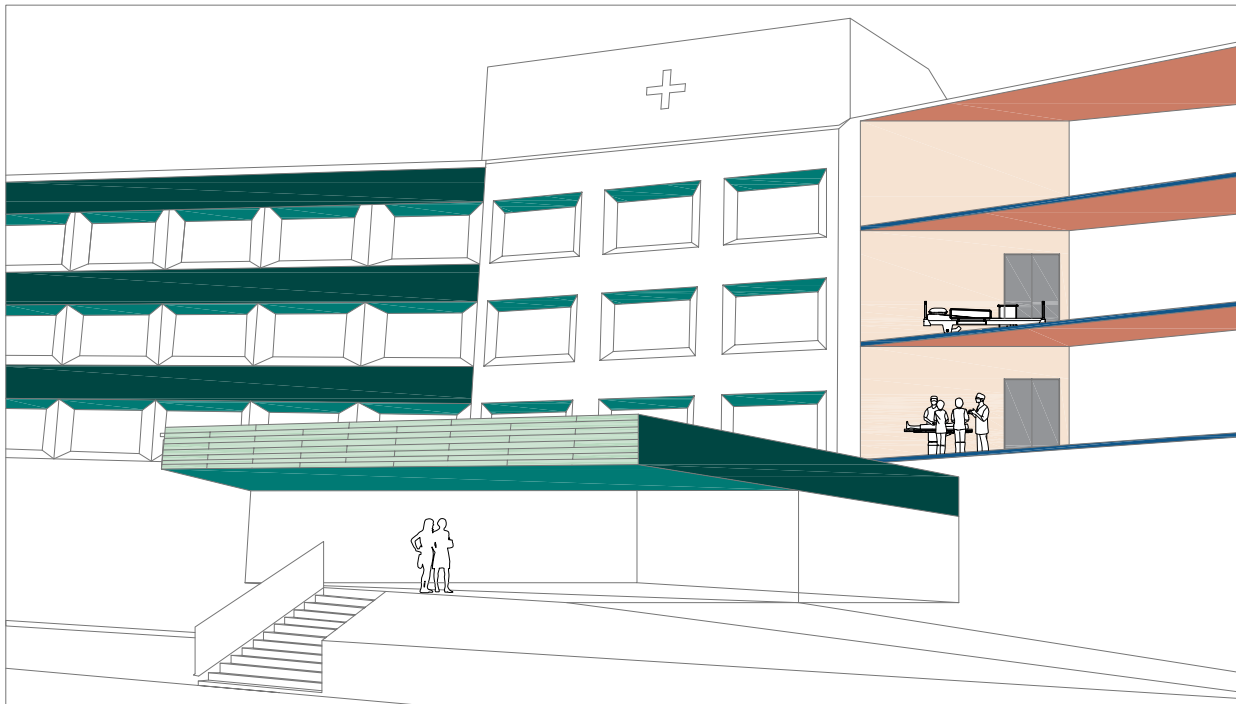
In addition to environmental benefits, purchasing certified products has economic and social benefits, since it guarantees dignified social and labour conditions for the employees of the forestry management companies and other companies farther down the chain. In many cases, it is also a huge boon to revitalise rural areas.

**THE ENVIRONMENTAL  
IMPACT OF OUR  
PRODUCT DURING ITS  
USE STAGE IS ZERO.**

## Zero environmental impact.

The life cycle of an HPL is more than thirty (30) years. During all this time, and thanks to the surface composition of the board, that protects the wood, the finish of our product is stable and does not need any maintenance, sanding, varnishing, painting or any type of arrangement. Throughout its useful life, during its use stage, our materials do not require any type of chemical product to fix or clean them, so environmental impact in this regard, is zero.

# OUR PRODUCTS.



- NATURCLAD-W
- NATURCLAD-B
- NATURSIDING-W
- NATURSIDING-B
- NATURSOFFIT-W
- NATURFLOOR-W
- NATURSKININT-W
- NATURHARDPANEL-W

## NATURFLOOR-W

### **MAINTENANCE-FREE NATURAL WOOD FLOOR FOR INTERIORS.**

NATURFLOOR-W is a maintenance-free floor for indoor spaces. Designed specifically for areas with heavy traffic, like hotels, offices, museums, airports, and shops, it is also suitable for residential applications and can be installed over radiant flooring.

The anti-moisture treatment on the surface, along with the birch plywood (9-layer marine birch plywood) and counterbalance with HPL barrier, applicable to all woods and finishes, means that NATURFLOOR-W can be installed in areas frequently in contact with water. There is an option to specify even better anti-slip resistance.

This is a durable and sustainable product, 100% water-resistant, and with an AC6 score on wear resistance and Grade-4 scratch resistance. This makes it an ideal material for commercial spaces with heavy traffic.



Natural wood



Maintenance-free



Water-tight



Slip resistant



Stain resistant



Easy to clean



Sustainable

**PRODUCT**  
**CANDIDATE FOR**  
**OBTAINING LEED**  
**CREDITS.**

## Health.

To certify our NATURFLOOR-W product, we use the Indoor Advantage Air Gold Certificate, since this certificate is well-known for floors around the world. It is based on controlling the quality of the air within and around buildings and structures, especially in terms of the health and comfort of the building's occupants. When we speak of air quality, we must speak of VOC emissions (Volatile Organic Compound), meaning the volatile organic components that the product emits.

This document certifies that NATURFLOOR-W has low VOC emissions with the indoor air quality standard (IAQ). From a sustainable construction perspective, these products are candidates for obtaining LEED credits in the Indoor Air Quality section.



**COMPLEMENTARY  
TO CLEANING AND  
DESINFECTION  
PROTOCOLS.**

## Cleaning and disinfection.

- > Dirt does not stick easily to the surface of the NATURFLOOR-W boards. However, if the surface becomes dirty it can be cleaned with lukewarm water mixed with liquid detergent, using a soft cloth and never rubbing the surface dry.
- > For persistent stains, conventional commercial bleaches can be used, always diluted in the concentrations recommended by the manufacturer.
- > Never use detergents containing abrasive particles.
- > Cloths, sponges or paper with abrasive agents should never be used as they can damage the surface.
- > Do not use excess water, or leave puddles of water on the floor.
- > Cleaning with pressurized water machines is not allowed.
- > It is always recommended to carry out a cleaning test on a small area of the material.
- > The use of solvents and chemical cleaning products must always be carried out respecting the corresponding safety and hygiene rules.
- > There is a list of commercial products that can be used. For more details, consult the PARKLEX PRODEMA Technical Department.



**NO TYPE OF  
MAINTENANCE IS  
REQUIRED.**

## Durability.

The finish of our interior floor product is stable with minimal evolution over time. It does not need any varnish or paint to remain just like the very first day. The surface composition of the boards protects the product from moisture, wear, scratching, blows, marks from heels and pets, fading from sunlight, and stains, eliminating the need for any later treatment. Thanks to its durability, no type of maintenance is required.

The life cycle of an HPL is more than thirty (30) years. This makes our engineered hardwood floor a product with structural durability of more than thirty years. The structural durability of natural wood is less.

This is a durable and sustainable product (FSC), 100% water-resistant (NATURFLOOR-W can be installed in areas frequently in contact with water), and with an AC6 score on wear resistance and Grade-4 scratch resistance. This makes it an ideal material for commercial spaces with heavy traffic.



Hospital de Valdecilla | Arquitecto: Eduardo Herráez Fernandez | Santander, Cantabria

## NATURHARDPANEL-W

### **MAINTENANCE-FREE NATURAL WOOD PANEL FOR INTERIOR WALLS AND CEILINGS.**

Natural wood that is extremely moisture- and fire-resistant, for interior walls and ceilings.

Thanks to the technical leak-tightness and moisture-resistance properties of the natural wood veneer, NATURHARDPANEL-W brings a feeling of special warmth to indoor areas in frequent contact with water. It is also a high resistance covering for commercial spaces.

It has been designed for high-traffic areas such as hospitals, hotels, offices, museums, or institutional buildings.



Natural wood



Maintenance-free



Fire performance  
B-s1,d0 | Class A



Stain resistant



Sustainable



Antibacterial surface



Easy to clean



Suitable for cleaning with  
water alcohol and gel

**IT ELIMINATES THE 99'9%  
OF SURFACE BACTERIA  
WITHIN 24 HOURS.**

## Anti-bacterial surface protection.

NATURHARDPANEL-W contains silver ions, a naturally antibacterial element that helps to eliminate 99.9% of surface bacteria (Staphilococcus Aureus and Escherichia Coli) within 24 hours.

PARKLEX PRODEMA use a technology that impregnates the natural timber veneer with a specific anti-bacteria overlay. This overlay lasts for the whole life of the panel; therefore, the anti-bacterial features are permanent and require no additional treatment (Tests according to ISO 22196:2007 / JIS Z 2801:2010).

*The antibacterial properties of our panels have been verified by independent regulators, with tests carried out to certify their effectiveness in eliminating 99.9% of surface bacteria.*

Besides, a special resin incorporated into our production process protects our panels against damage from household, commercial and alcohol-based cleaning products, as long as PARKLEX PRODEMA standard cleaning and maintenance recommendations are followed.

NATURHARDPANEL-W anti-bacteria: the best solution for high-sensitive areas -hospitals, surgeries, nursing homes and laboratories-.

**COMPLEMENTARY  
TO CLEANING AND  
DESINFECTION  
PROTOCOLS.**

## Cleaning and disinfection.

- > Dirt does not stick easily to the surface of the NATURHARDPANEL-W boards. However, if the surface becomes dirty it can be cleaned with lukewarm water mixed with liquid detergent, using a soft cloth and never rubbing the surface dry.
- > For persistent stains, conventional commercial bleaches can be used, always diluted in the concentrations recommended by the manufacturer.
- > Never use detergents containing abrasive particles.
- > Cloths, sponges or paper with abrasive agents should never be used as they can damage the surface.
- > Cleaning with pressurized water machines is not allowed.
- > It is always recommended to carry out a cleaning test on a small area of the material.
- > The use of solvents and chemical cleaning products must always be carried out respecting the corresponding safety and hygiene rules.
- > There is a list of commercial products that can be used. For more details, consult the PARKLEX PRODEMA Technical Department.

**PROTECTED AGAINST  
POTENTIAL DAMAGE  
CAUSED BY ALCOHOL-  
BASED CLEANERS.**

## Resistant to chemical agents.

PARKLEX PRODEMA panels are protected against potential damage caused by alcohol-based cleaners, including those used to prevent the spread of COVID-19.

- > For persistent stains, conventional commercial bleaches can be used, always diluted in the concentrations recommended by the manufacturer.
- > Never use detergents containing abrasive particles.
- > It is always recommended to carry out a cleaning test on a small area of the material.
- > The use of solvents and chemical cleaning products must always be carried out respecting the corresponding safety and hygiene rules.
- > There is a list of commercial products that can be used. For more details, consult the PARKLEX PRODEMA Technical Department.

**LONGER LASTING  
PROTECTION.**

## Greater lifespan.

Preventing bacterial surface contamination extends the lifespan of our products. As antibacterial protection is a natural part of our products, rather than an additional coating, PARKLEX PRODEMA panels are ingrained with longer lasting protection.

**NO TYPE OF  
MAINTENANCE IS  
REQUIRED.**

## Durability.

The finish of our interior wall and ceiling products is stable and does not change over time. It does not need any varnish or paint to remain just like the very first day. The surface composition of the boards protects the product from moisture, wear, scratching, blows, fading from sunlight, and stains, eliminating the need for any later treatment. Thanks to its durability, no type of maintenance is required.

The life cycle of an HPL is more than thirty (30) years. This makes NATURHARDPANEL-W a product with structural durability of more than thirty years. The structural durability of natural wood is less.

These are durable and sustainable products, moisture-resistant, and with Grade-3 scratch resistance. This makes it an ideal material for commercial spaces with heavy traffic. Thanks to the technical leak-tightness and moisture-resistance properties of the natural wood veneer, NATURHARDPANEL-W is a high-resistance covering for commercial spaces.



**PRODUCT CANDIDATE FOR  
OBTAINING LEED CREDITS.**

## Health.

To certify our NATURHARDPANEL-W product, we use Clean Air Gold Certificate. It is based on controlling the quality of the air within and around buildings and structures, especially in terms of the health and comfort of the building's occupants. When we speak of air quality, we must speak of VOC emissions (Volatile Organic Compound), meaning the volatile organic components that the product emits. This certificate analyses the results obtained, based on the CDHP (California Department of Public Health Standard Method). Based on the numbers, it indicates in which of the three foreseen scenarios the product can be installed: offices, schools, or private residences.

This document certifies that NATURHARDPANEL-W has low VOC emissions with the indoor air quality standard (IAQ). From a sustainable construction perspective, these products are candidates for obtaining LEED credits in the Indoor Air Quality section.



**SUITABLE FOR  
FOOD CONTACT.**

## Food contact.

The NATURHARDPANEL-W S HPL board is suitable for contact with food in accordance with CE Regulation 1935/2004 and EU Regulation No. 10/2011.

- > Suitable for food contact
- > Complementary to cleaning and disinfection protocols.
- > Optimum hygiene of the entire assembly thanks to complementary products.

**THE BEST  
REACTION-TO-FIRE  
CLASSIFICATION  
FOR AN ORGANIC  
PRODUCT.**

## Fire: the best classification.

NATURHARDPANEL-W timber faced panels are classified as Class A (ASTM E84) or B-s1,d0 (as per EN 13501-1). This proves that it achieves the absolute best reaction-to-fire classification for an organic product. The test also includes a measurement of smoke production and the presence of burning droplets, with NATURHARDPANEL-W achieving the highest rating in both categories.



*Hospital de Barcelona | Pínearq Arquitectos | Barcelona*

NATURSKININT-W

**NATURAL WOOD VENEER  
FOR APPLICATION ON SURFACES.**

NATURSKININT-W is a high density natural wood veneer. Its thickness (1.5mm - 3mm / 0.06" - 0.11") makes it flexible for application on different surfaces, such as doors, columns, furniture and other interior elements. It adheres to any material -chipboard, fiber cement, MDF, metal, etc.- and its radius of curvature of up to 25cm / 9.85" allows it to cover rounded corners, columns... Suitable for covering doors, making furniture, etc.



Natural wood



Maintenance-free



Stain resistant



Sustainable



Antibacterial surface



Easy to clean



Suitable for cleaning with water alcohol and gel

**IT ELIMINATES THE 99'9%  
OF SURFACE BACTERIA  
WITHIN 24 HOURS.**

## Anti-bacterial surface protection.

NATURSKININT-W contains silver ions, a naturally antibacterial element that helps to eliminate 99.9% of surface bacteria (Staphilococcus Aureus and Escherichia Coli) within 24 hours.

PARKLEX PRODEMA use a technology that impregnates the natural timber veneer with a specific anti-bacteria overlay. This overlay lasts for the whole life of the panel; therefore, the anti-bacterial features are permanent and require no additional treatment (Tests according to ISO 22196:2007 / JIS Z 2801:2010).

*The antibacterial properties of our panels have been verified by independent regulators, with tests carried out to certify their effectiveness in eliminating 99.9% of surface bacteria.*

Besides, a special resin incorporated into our production process protects our panels against damage from household, commercial and alcohol-based cleaning products, as long as PARKLEX PRODEMA standard cleaning and maintenance recommendations are followed.

NATURSKININT-W anti-bacteria: the best solution for high-sensitive areas -hospitals, surgeries, nursing homes, laboratories-.

**COMPLEMENTARY  
TO CLEANING AND  
DESINFECTION  
PROTOCOLS.**

## Cleaning and disinfection.

- > Dirt does not stick easily to the NATURSKININT-W veneer. However, if the surface becomes dirty it can be cleaned with lukewarm water mixed with liquid detergent, using a soft cloth and never rubbing the surface dry.
- > For persistent stains, conventional commercial bleaches can be used, always diluted in the concentrations recommended by the manufacturer.
- > Never use detergents containing abrasive particles.
- > Cloths, sponges or paper with abrasive agents should never be used as they can damage the surface.
- > Cleaning with pressurized water machines is not allowed.
- > It is always recommended to carry out a cleaning test on a small area of the material.
- > The use of solvents and chemical cleaning products must always be carried out respecting the corresponding safety and hygiene rules.
- > There is a list of commercial products that can be used. For more details, consult the PARKLEX PRODEMA Technical Department.
- > Always consult the list of commercial products that can be used on the surface to which the NATURSKININT-W sheet is adhered.

**PROTECTED AGAINST  
POTENTIAL DAMAGE  
CAUSED BY ALCOHOL-  
BASED CLEANERS.**

## Resistant to chemical agents.

PARKLEX PRODEMA panels are protected against potential damage caused by alcohol-based cleaners, including those used to prevent the spread of COVID-19.

- > For persistent stains, conventional commercial bleaches can be used, always diluted in the concentrations recommended by the manufacturer.
- > Never use detergents containing abrasive particles.
- > It is always recommended to carry out a cleaning test on a small area of the material.
- > The use of solvents and chemical cleaning products must always be carried out respecting the corresponding safety and hygiene rules.
- > There is a list of commercial products that can be used. For more details, consult the PARKLEX PRODEMA Technical Department.



**LONGER LASTING  
PROTECTION.**

## Greater lifespan.

Preventing bacterial surface contamination extends the lifespan of our products. As antibacterial protection is a natural part of our products, rather than an additional coating, PARKLEX PRODEMA panels are ingrained with longer lasting protection.

**NO TYPE OF  
MAINTENANCE IS  
REQUIRED.**

## Durability.

The finish of our interior covering product is stable and does not change over time. It does not need any varnish or paint to remain just like the very first day. The surface composition of the boards protects the product from moisture, wear, scratching, blows, fading from sunlight, and stains, eliminating the need for any later treatment. Thanks to its durability, no type of maintenance is required.

The life cycle of an HPL is more than thirty (30) years. This makes NATURSKININT-W a product with structural durability of more than thirty years. The structural durability of natural wood is less.

These are durable and sustainable products, moisture-resistant, and with Grade-3 scratch resistance. This makes it an ideal material for commercial spaces with heavy traffic. Thanks to the technical leak-tightness and moisture-resistance properties of the natural wood veneer, NATURSKININT-W is a high-resistance covering for commercial spaces.

**SUITABLE FOR  
FOOD CONTACT.**

## Food contact.

The NATURSKININT-W HPL veneer is suitable for contact with food in accordance with CE Regulation 1935/2004 and EU Regulation No. 10/2011.

- > Suitable for food contact
- > Complementary to cleaning and disinfection protocols.
- > Optimum hygiene of the entire assembly thanks to complementary products.



*Hospital de Barcelona | Pinearq Arquitectos | Barcelona*

## NATURCLAD

### **MAINTENANCE-FREE WOODEN AND SUPER-TEXTURIZED PANELS FOR FAÇADES.**

NATURCLAD coverings provide for installation of wood covering (NATURCLAD-W) or super-texturized panels (NATURCLAD-B) for ventilated façades, with no need for maintenance.

They consist of a high-density Bakelite body, a wood veneer treated with synthetic resins on the surface (NATURCLAD-W) or a unique texture on the surface that does not create repeated patterns (NATURCLAD-B), and a triple-layer exterior film that provides greater durability to the panels and protects them from solar radiation, atmospheric agents, and dirtiness, and has anti-graffiti properties.



Natural wood



Maintenance-free



Resistant to extreme atmospheric agents



Easy to clean



Sustainable



*Life Source | RSP Architects | Minneapolis MN*

## NATURSOFFIT-W

### **MAINTENANCE-FREE NATURAL WOOD PANEL FOR SOFFIT APPLICATIONS.**

NATURSOFFIT-W is an HPL product with natural wood designed for exclusive use in sheltered and horizontal applications, such as false ceilings and roofs. The panels cannot be directly exposed to ultraviolet radiation or water, but they can be applied to outdoor areas protected from these two elements. They do not require maintenance and provide outdoor spaces with the warmth and versatility of a natural wood design.

NATURSOFFIT-W increases the range of wood species for outdoors without maintenance.



Natural wood



Maintenance-free



Applications protected from the sun



Continuity: interior walls and ceilings



Sustainable



Watson Lake Hospital | Kobayashi Zedda Architects + DGBK Architects | Watson Lake, YT, Canadá Yukon (Canadá)



## NATURSIDING

### **MAINTENANCE-FREE PRE-MACHINED WOODEN AND SUPER-TEXTURIZED PANELS FOR FAÇADES.**

Provides for installing pre-machined wood or super-texturized panels on façades with no need for maintenance.

They consist of a high-density bakelite body, a wood veneer treated with synthetic resins on the surface (NATURSIDING-W) or a unique texture on the surface that does not create repeated patterns (NATURSIDING-B), and a triple-layer exterior film that provides greater durability to the panels and protects them from solar radiation, atmospheric agents, and dirtiness, and has anti-graffiti properties.



Natural wood



Maintenance-free



Resistant to extreme atmospheric agents



Easy to clean



Sustainable



Johnson County Ambulance | OPN Architects | Iowa City EE. UU.

[CONTACT](#) US FOR MORE INFO.

**[WWW.PARKLEXPROMA.COM](http://WWW.PARKLEXPROMA.COM)**