

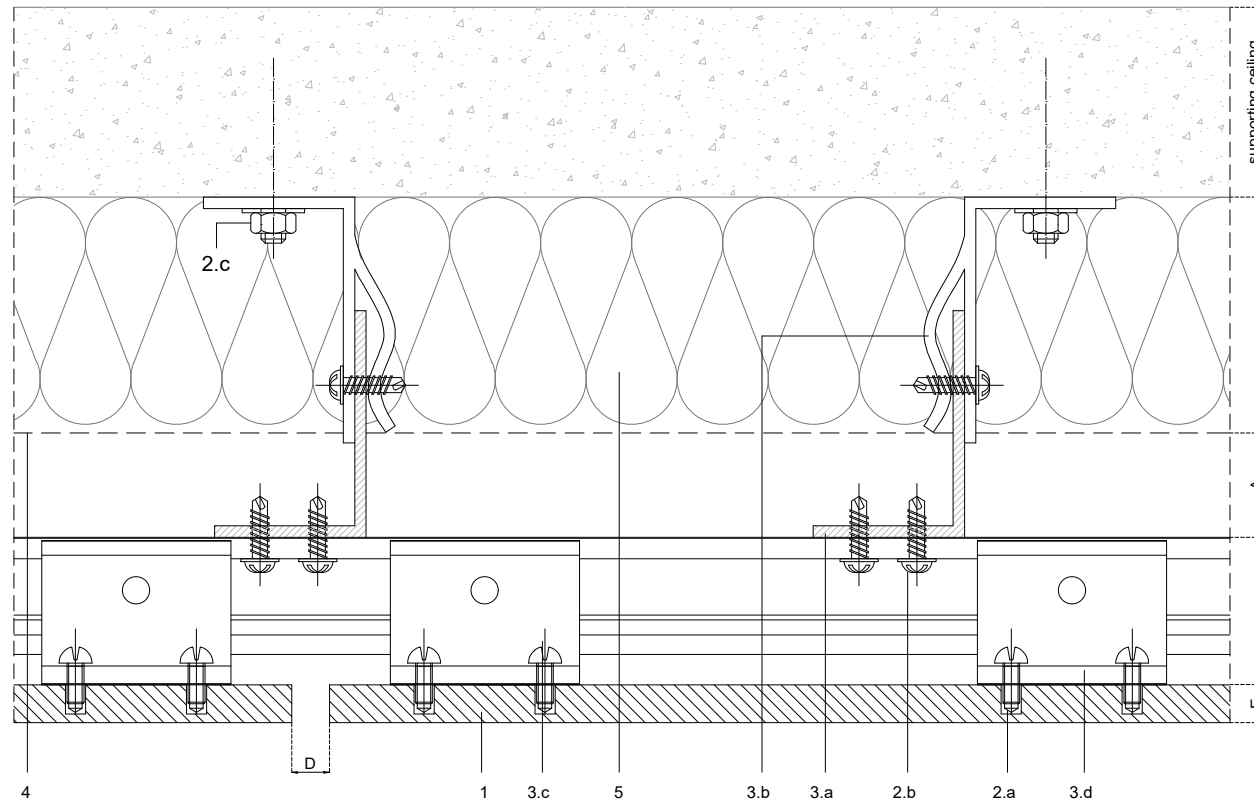
A=Lateral edge distance
 B=Bottom edge distance
 C=Upper edge distance

FIXING DETAIL

The updated version of this present installation detail can be found on the PARKLEX PRODEMA web.
 Panel sizes and maximum distances in technical catalogue.

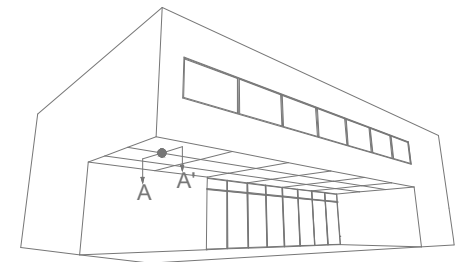
A-A'	JOINT DETAIL (PERP. TO GRAIN DIRECTION)
B-B'	JOINT DETAIL (GRAIN DIRECTION)
C-C'	SOFFIT-WALL INTERIOR DETAIL (PERP. TO GRAIN DIRECTION)
D-D'	SOFFIT-WALL EXTERIOR DETAIL (PERP. TO GRAIN DIRECTION)
E-E'	SOFFIT-WALL INTERIOR DETAIL (GRAIN DIRECTION)
F-F'	SOFFIT-WALL EXTERIOR DETAIL (GRAIN DIRECTION)

PARKLEX PRODEMA www.parklexprodema.com	PRODUCT	SYSTEM	DRAWN BY	DATE
	NATURSOFFIT	CONCEALED FASTENING WITH HANGING HOOKS, SOFFIT SYSTEM	Joseba Salbide	01/2022
	PLAN#	TITLE	APPROVED BY	PAGE
	NSF2-02-A-G.P.	GENERAL PERSPECTIVE	Maialen Irastorza	1 / 7



1	NATURSOFFIT
2	Screws
2.a	Hanging hook fastener - panel back
2.b	Channel fastener - by others
2.c	Wall fixing screw - by others
2.d	Fixing screw - by others
3	Profiles
3.a	Aluminium L profile (40x60)
3.b	Wall bracket
3.c	Horizontal carrier rail
3.d	Panel fixing bracket
3.e	Corner profile - by others
4	Water resistant barrier - by others
5	Thermal insulation - by others

A	Required min. air chamber $\geq 20\text{mm}$
B	Circulation of air $\geq 20\text{mm}$
D	Expansion joint 6-8mm
E	Panel thickness $\geq 8\text{mm}$

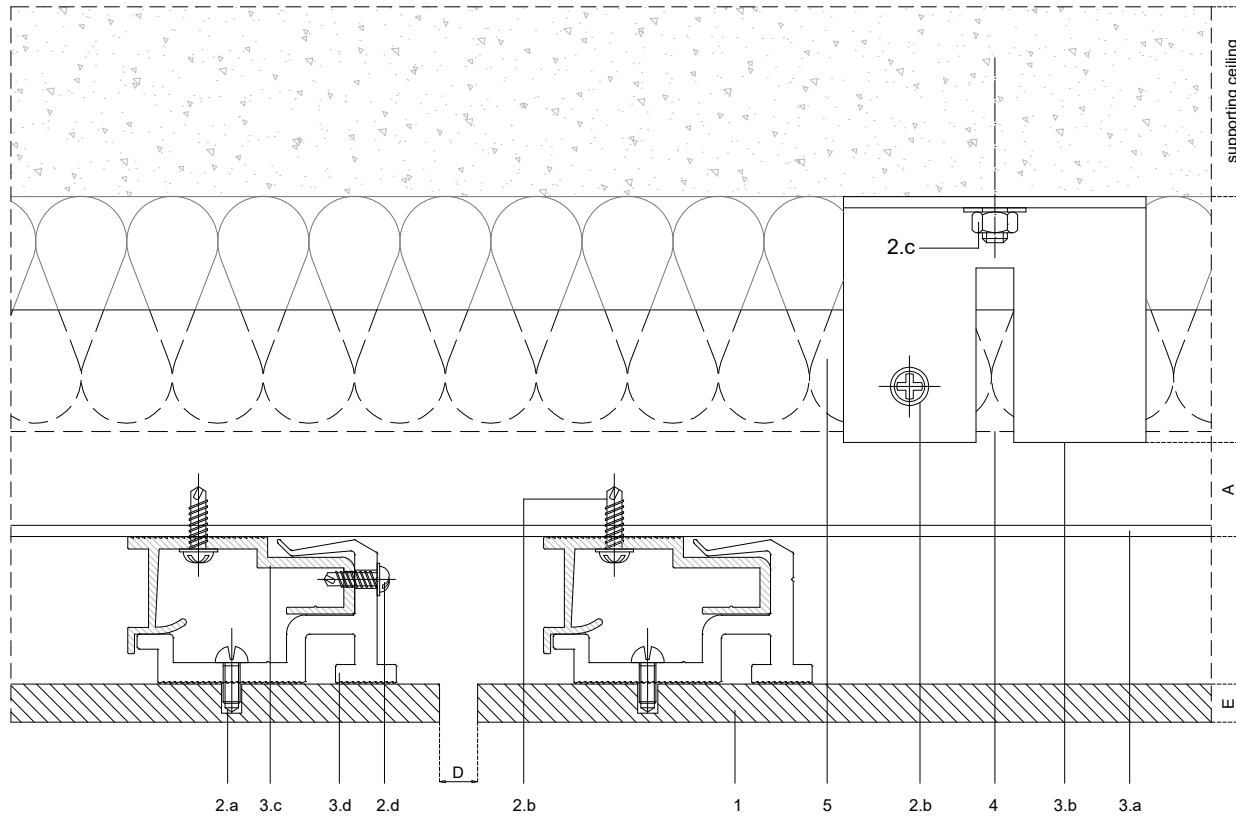


Scale 1:2

Measures: mm

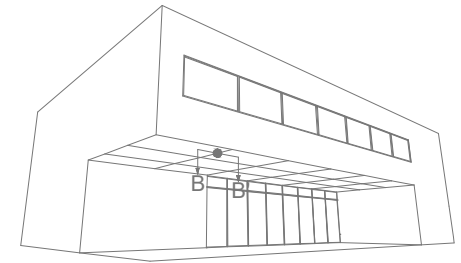
PARKLEX PRODEMA
www.parklexprodema.com

PRODUCT	NATURSOFFIT	SYSTEM	CONCEALED FASTENING WITH HANGING HOOKS, SOFFIT SYSTEM	DRAWN BY	Joseba Salbide	DATE	01/2022
PLAN#	NSF2-02-A-A	TITLE	DETAIL A-A' // JOINT DETAIL (PERP. TO GRAIN DIRECTION)	APPROVED BY	Maialen Irastorza	PAGE	2 / 7



1	NATURSOFFIT
2	Screws
2.a	Hanging hook fastener - panel back
2.b	Channel fastener - by others
2.c	Wall fixing screw - by others
2.d	Fixing screw - by others
3	Profiles
3.a	Aluminium L profile (40x60)
3.b	Wall bracket
3.c	Horizontal carrier rail
3.d	Panel fixing bracket
3.e	Corner profile - by others
4	Water resistant barrier - by others
5	Thermal insulation - by others

A	Required min. air chamber $\geq 20\text{mm}$
B	Circulation of air $\geq 20\text{mm}$
D	Expansion joint 6-8mm
E	Panel thickness $\geq 8\text{mm}$

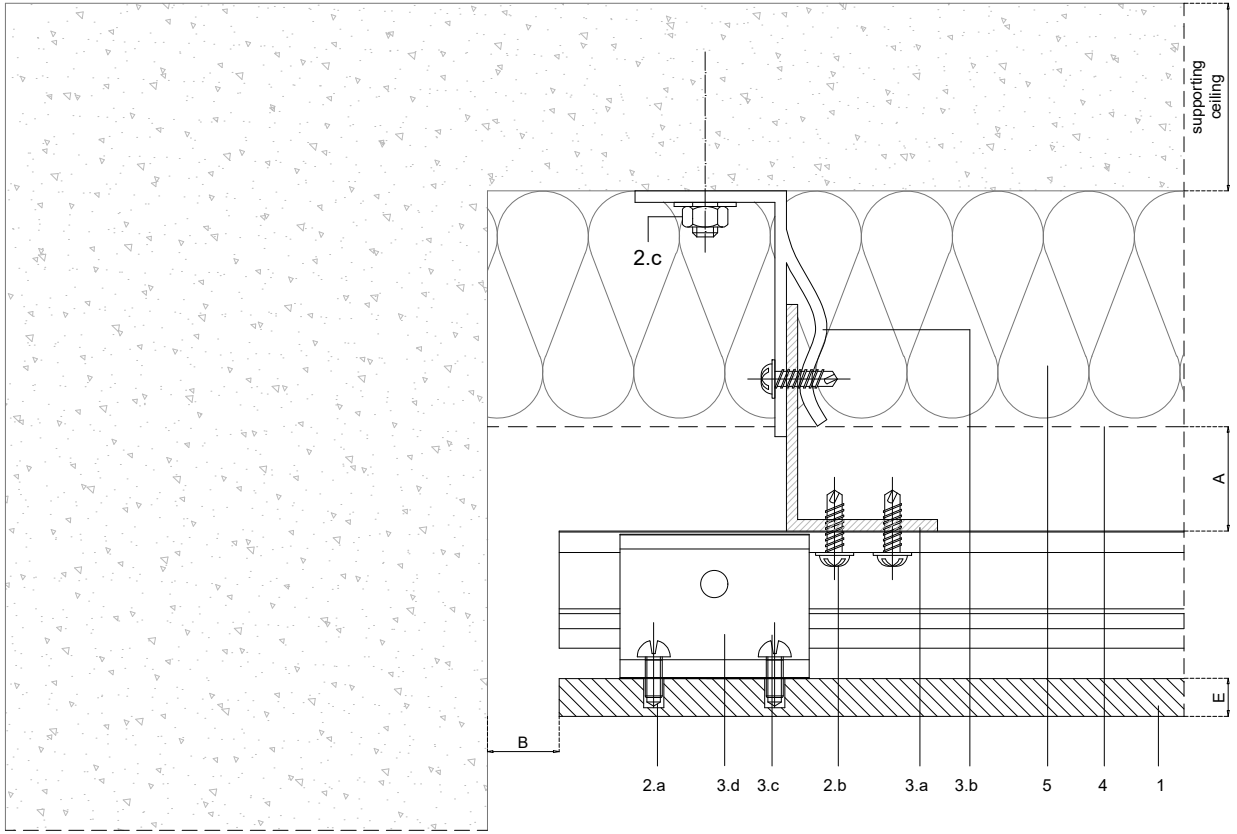


Scale 1:2

Measures: mm

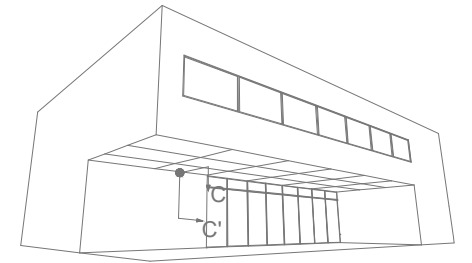
PARKLEX PRODEMA
www.parklexprodema.com

PRODUCT	NATURSOFFIT	SYSTEM	CONCEALED FASTENING WITH HANGING HOOKS, SOFFIT SYSTEM	DRAWN BY	Joseba Salbide	DATE	01/2022
PLAN#	NSF2-02-A-B	TITLE	DETAIL B-B' // JOINT DETAIL (GRAIN DIRECTION)	APPROVED BY	Maialen Irastorza	PAGE	3 / 7



1	NATURSOFFIT
2	Screws
2.a	Hanging hook fastener - panel back
2.b	Channel fastener - by others
2.c	Wall fixing screw - by others
2.d	Fixing screw - by others
3	Profiles
3.a	Aluminium L profile (40x60)
3.b	Wall bracket
3.c	Horizontal carrier rail
3.d	Panel fixing bracket
3.e	Corner profile - by others
4	Water resistant barrier - by others
5	Thermal insulation - by others

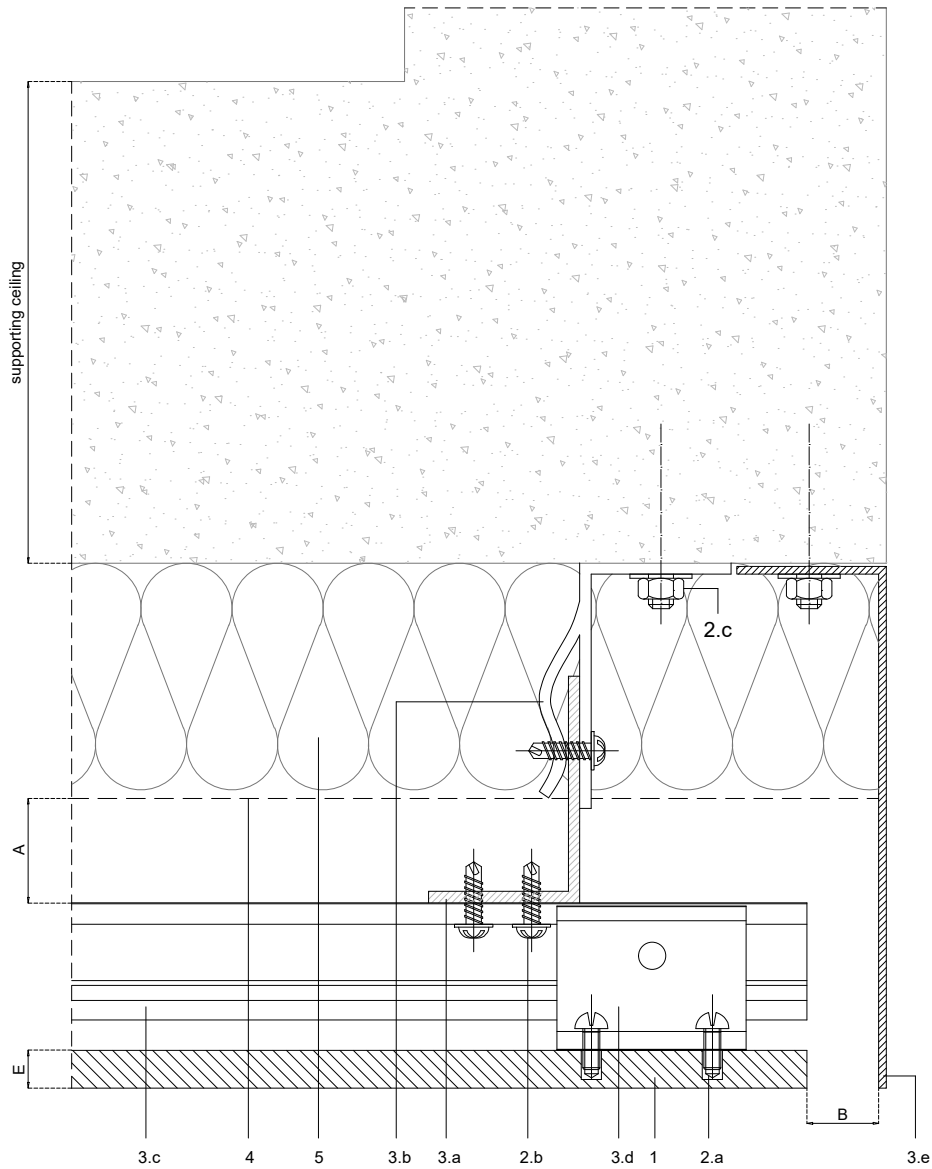
A	Required min. air chamber $\geq 20\text{mm}$
B	Circulation of air $\geq 20\text{mm}$
D	Expansion joint 6-8mm
E	Panel thickness $\geq 8\text{mm}$



Scale 1:2

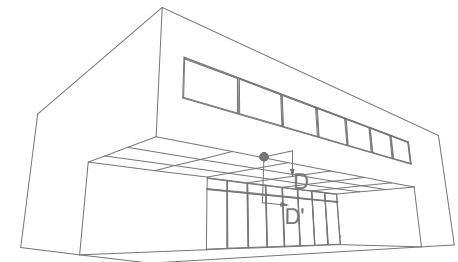
Measures: mm

PARKLEX PRODEMA www.parklexprodema.com	PRODUCT NATURSOFFIT	SYSTEM CONCEALED FASTENING WITH HANGING HOOKS, SOFFIT SYSTEM	DRAWN BY Joseba Salbide	DATE 01/2022
	PLAN# NSF2-02-A-C	TITLE DETAIL C-C' // SOFFIT-WALL INTERIOR CORNER (PERP. TO GRAIN DIRECTION)	APPROVED BY Maialen Irastorza	PAGE 4 / 7



1	NATURSOFFIT
2	Screws
2.a	Hanging hook fastener - panel back
2.b	Channel fastener - by others
2.c	Wall fixing screw - by others
2.d	Fixing screw - by others
3	Profiles
3.a	Aluminium L profile (40x60)
3.b	Wall bracket
3.c	Horizontal carrier rail
3.d	Panel fixing bracket
3.e	Corner profile - by others
4	Water resistant barrier - by others
5	Thermal insulation - by others

A	Required min. air chamber $\geq 20\text{mm}$
B	Circulation of air $\geq 20\text{mm}$
D	Expansion joint 6-8mm
E	Panel thickness $\geq 8\text{mm}$

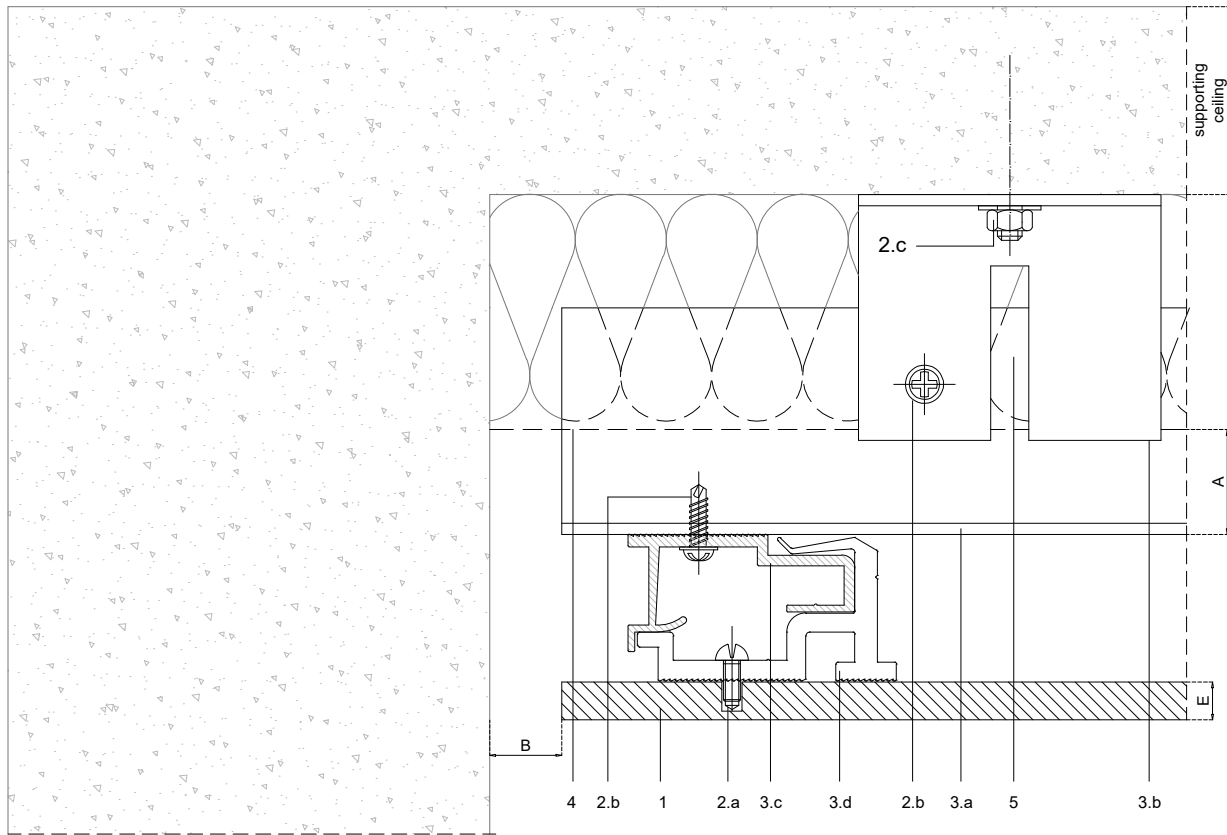


Scale 1:2

Measures: mm

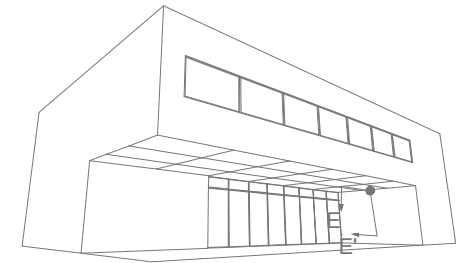
PARKLEX PRODEMA
www.parklexprodema.com

PRODUCT	NATURSOFFIT	SYSTEM	CONCEALED FASTENING WITH HANGING HOOKS, SOFFIT SYSTEM	DRAWN BY	Joseba Salbide	DATE	01/2022
PLAN#	NSF2-02-A-D	TITLE	DETAIL D-D' // SOFFIT-WALL EXTERIOR CORNER (PERP. TO GRAIN DIRECTION)	APPROVED BY	Maialen Irastorza	PAGE	5 / 7



1	NATURSOFFIT
2	Screws
2.a	Hanging hook fastener - panel back
2.b	Channel fastener - by others
2.c	Wall fixing screw - by others
2.d	Fixing screw - by others
3	Profiles
3.a	Aluminium L profile (40x60)
3.b	Wall bracket
3.c	Horizontal carrier rail
3.d	Panel fixing bracket
3.e	Corner profile - by others
4	Water resistant barrier - by others
5	Thermal insulation - by others

A	Required min. air chamber $\geq 20\text{mm}$
B	Circulation of air $\geq 20\text{mm}$
D	Expansion joint 6-8mm
E	Panel thickness $\geq 8\text{mm}$

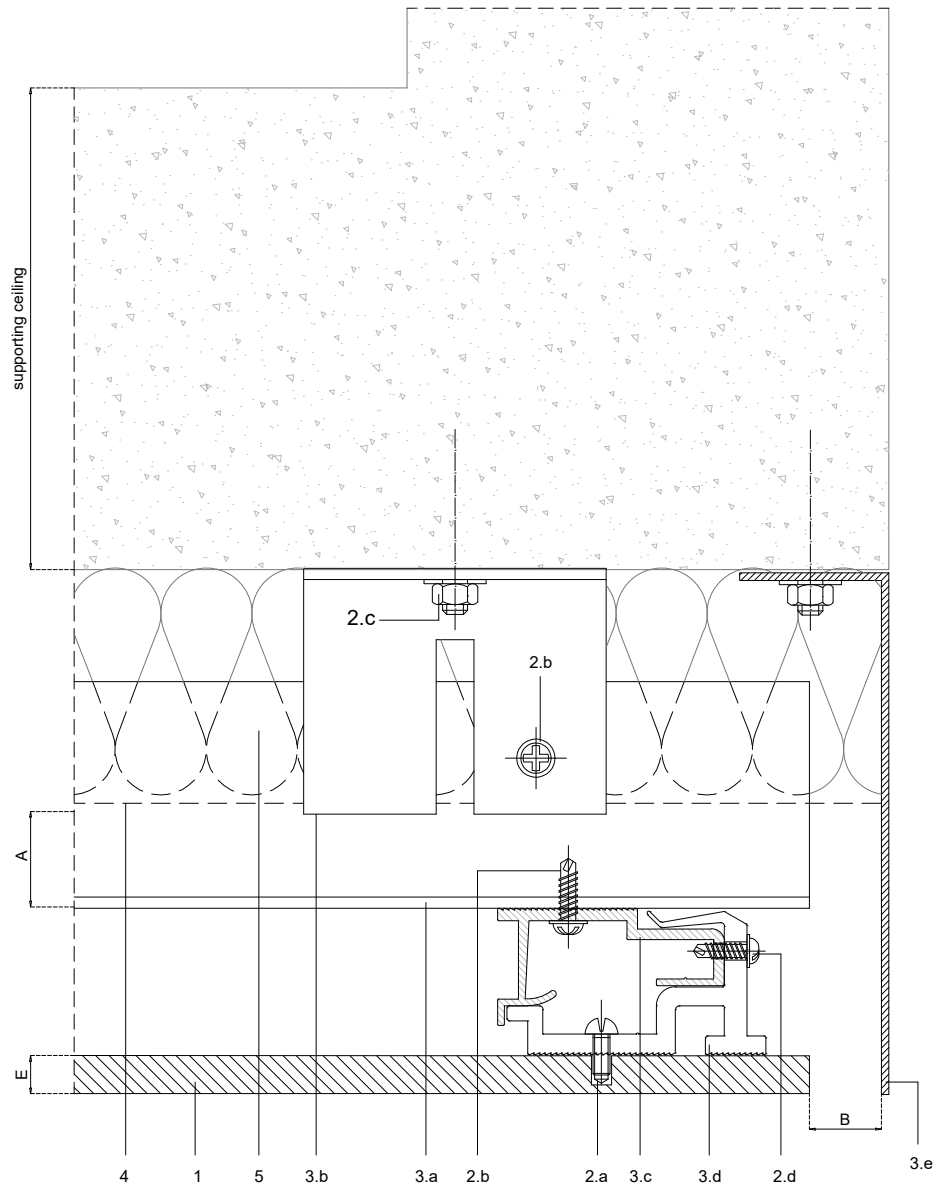


Scale 1:2

Measures: mm

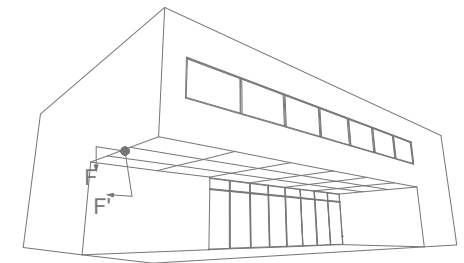
PARKLEX PRODEMA
www.parklexprodema.com

PRODUCT	NATURSOFFIT	SYSTEM	CONCEALED FASTENING WITH HANGING HOOKS, SOFFIT SYSTEM	DRAWN BY	Joseba Salbide	DATE	01/2022
PLAN#	NSF2-02-A-E	TITLE	DETAIL E-E' // SOFFIT-WALL INTERIOR CORNER (GRAIN DIRECTION)	APPROVED BY	Maialen Irastorza	PAGE	6 / 7



1	NATURSOFFIT
2	Screws
2.a	Hanging hook fastener - panel back
2.b	Channel fastener - by others
2.c	Wall fixing screw - by others
2.d	Fixing screw - by others
3	Profiles
3.a	Aluminium L profile (40x60)
3.b	Wall bracket
3.c	Horizontal carrier rail
3.d	Panel fixing bracket
3.e	Corner profile - by others
4	Water resistant barrier - by others
5	Thermal insulation - by others

A	Required min. air chamber $\geq 20\text{mm}$
B	Circulation of air $\geq 20\text{mm}$
D	Expansion joint 6-8mm
E	Panel thickness $\geq 8\text{mm}$



Scale 1:2

Measures: mm

PARKLEX PRODEMA
www.parklexprodema.com

PRODUCT	NATURSOFFIT	SYSTEM	CONCEALED FASTENING WITH HANGING HOOKS, SOFFIT SYSTEM	DRAWN BY	Joseba Salbide	DATE	01/2022
PLAN#	NSF2-02-A-F	TITLE	DETAIL F-F // SOFFIT-WALL EXTERIOR CORNER (GRAIN DIRECTION)	APPROVED BY	Maialen Irastorza	PAGE	7 / 7