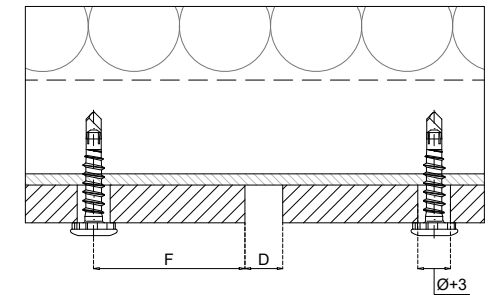
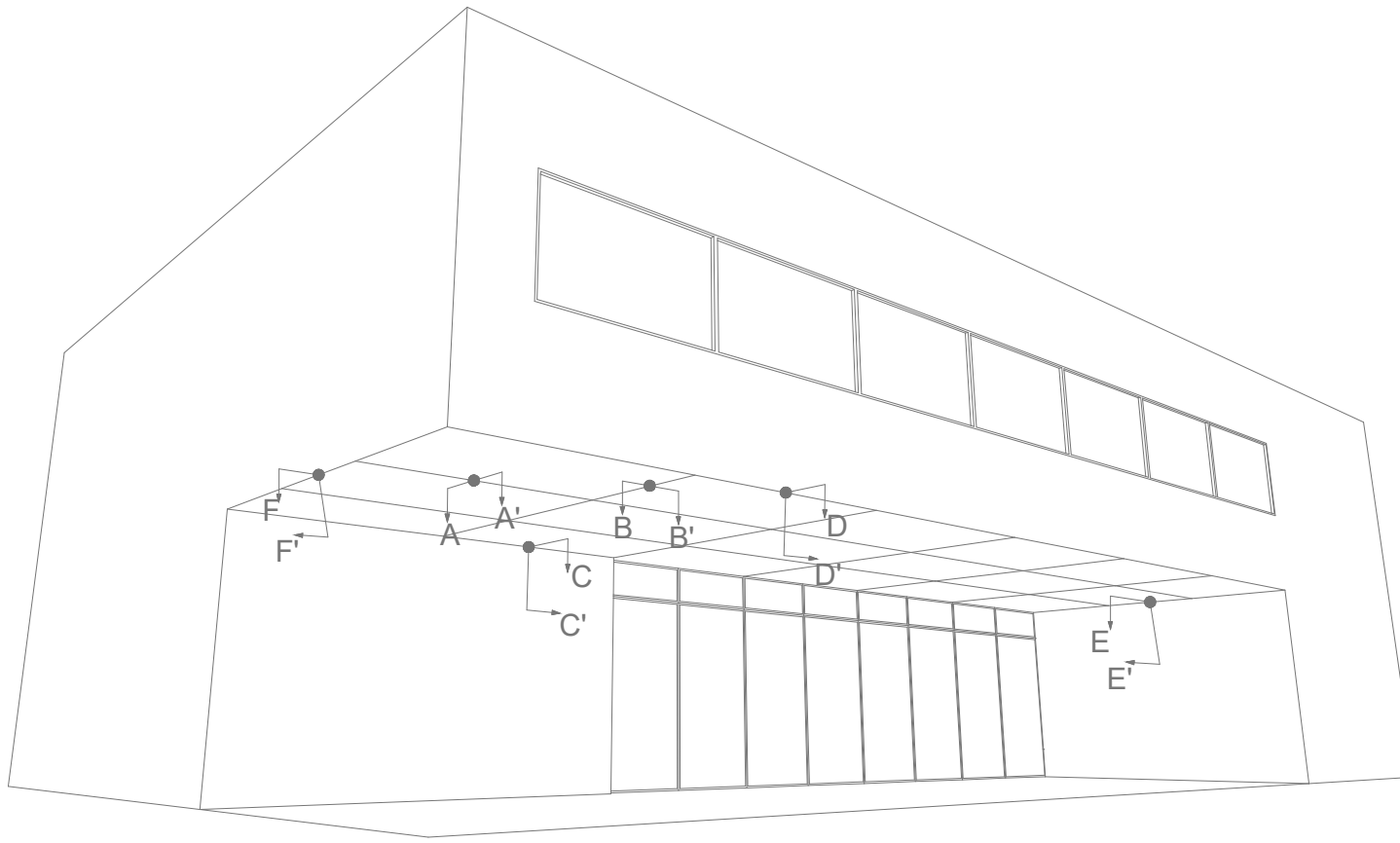
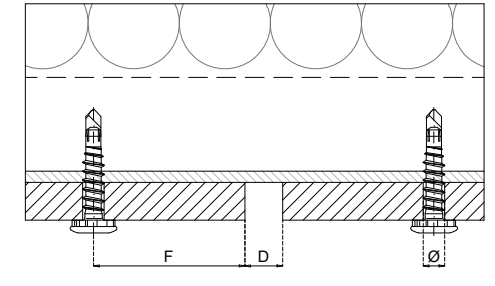


Fixing detail

Measures: mm



Floating point



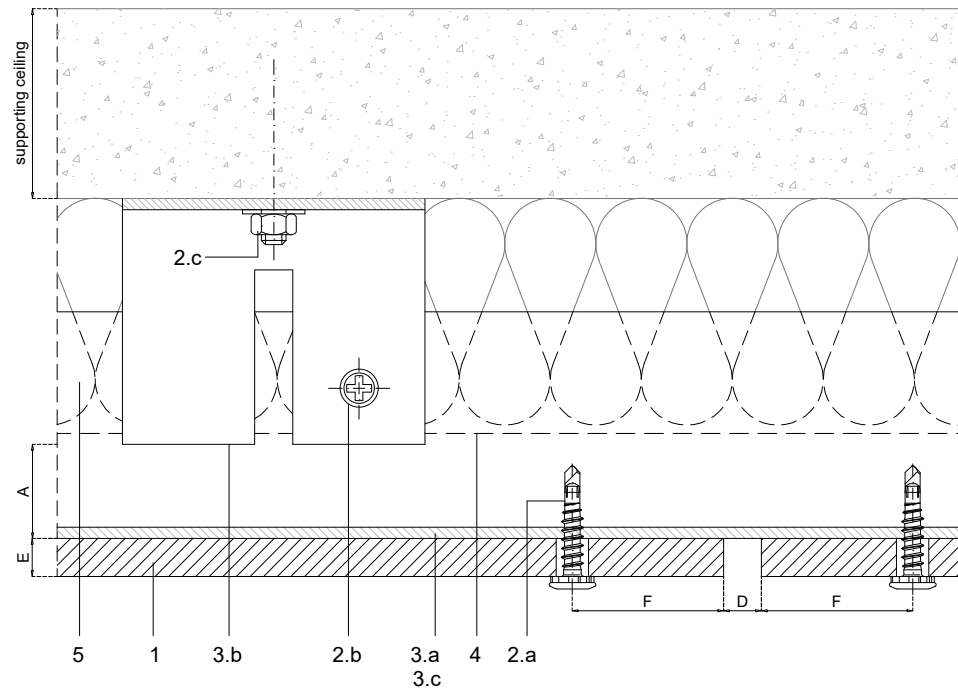
Fixed point

| | |
|------|--|
| A-A' | JOINT DETAIL (PERP. TO GRAIN DIRECTION) |
| B-B' | JOINT DETAIL (GRAIN DIRECTION) |
| C-C' | SOFFIT-WALL INTERIOR DETAIL (PERP. TO GRAIN DIRECTION) |
| D-D' | SOFFIT-WALL EXTERIOR DETAIL (PERP. TO GRAIN DIRECTION) |
| E-E' | SOFFIT-WALL INTERIOR DETAIL (GRAIN DIRECTION) |
| F-F' | SOFFIT-WALL EXTERIOR DETAIL (GRAIN DIRECTION) |

The updated version of this present installation detail can be found on the PARKLEX PRODEMA web. Panel sizes and maximum distances in technical catalogue.

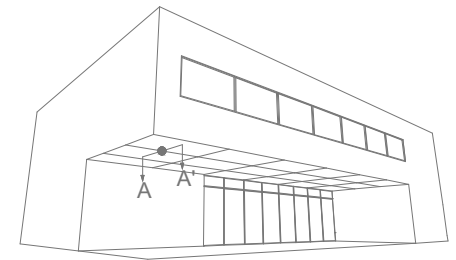


| | | | | | | | |
|---------|----------------|--------|---|-------------|-------------------|------|---------|
| PRODUCT | NATURSOFFIT | SYSTEM | VISIBLE FASTENING WITH SCREWS, SOFFIT SYSTEM | DRAWN BY | Joseba Salbide | DATE | 01/2022 |
| PLAN# | NSF2-01-A-G.P. | TITLE | GENERAL PERSPECTIVE | APPROVED BY | Maialen Irastorza | PAGE | 1 / 7 |



| | |
|-----|-------------------------------------|
| 1 | NATURSOFFIT |
| 2 | Screws |
| 2.a | Panel fastener metal |
| 2.b | Channel fastener - by others |
| 2.c | Wall fixing screw - by others |
| 3 | Profiles |
| 3.a | Aluminium L profile (40x60) |
| 3.b | Wall bracket |
| 3.c | Aluminium T profile |
| 3.d | Corner profile - by others |
| 4 | Water resistant barrier - by others |
| 5 | Thermal insulation - by others |

| | |
|---|---|
| A | Required min. air chamber $\geq 20\text{mm}$ |
| B | Circulation of air $\geq 20\text{mm}$ |
| D | Expansion joint 6-8mm |
| E | Panel thickness $\geq 8\text{mm}$ |
| F | Distance from the screws to the panel 20-40mm |

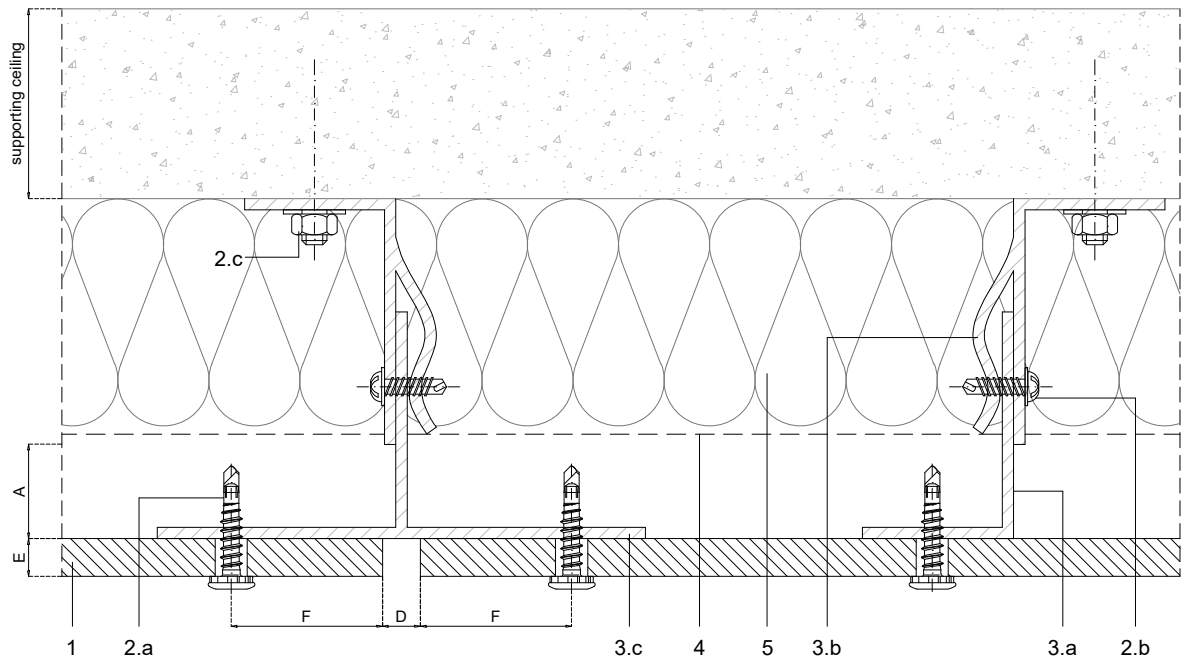


Scale 1:2

Measures: mm

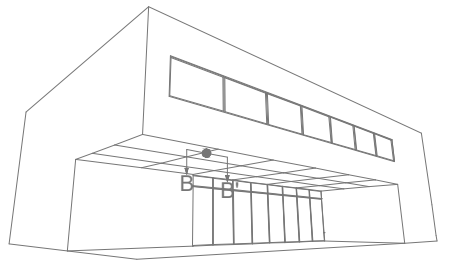
PARKLEX PRODEMA
www.parklexprodema.com

| | | | | | | | |
|---------|-------------|--------|--|-------------|-------------------|------|---------|
| PRODUCT | NATURSOFFIT | SYSTEM | VISIBLE FASTENING WITH SCREWS, SOFFIT SYSTEM | DRAWN BY | Joseba Salbide | DATE | 01/2022 |
| PLAN# | NSF2-01-A-A | TITLE | DETAIL A-A' // JOINT DETAIL (PERP. TO GRAIN DIRECTION) | APPROVED BY | Maialen Irastorza | PAGE | 2 / 7 |



| | |
|-----|-------------------------------------|
| 1 | NATURSOFFIT |
| 2 | Screws |
| 2.a | Panel fastener metal |
| 2.b | Channel fastener - by others |
| 2.c | Wall fixing screw - by others |
| 3 | Profiles |
| 3.a | Aluminium L profile (40x60) |
| 3.b | Wall bracket |
| 3.c | Aluminium T profile |
| 3.d | Corner profile - by others |
| 4 | Water resistant barrier - by others |
| 5 | Thermal insulation - by others |

| | |
|---|---|
| A | Required min. air chamber $\geq 20\text{mm}$ |
| B | Circulation of air $\geq 20\text{mm}$ |
| D | Expansion joint 6-8mm |
| E | Panel thickness $\geq 8\text{mm}$ |
| F | Distance from the screws to the panel 20-40mm |



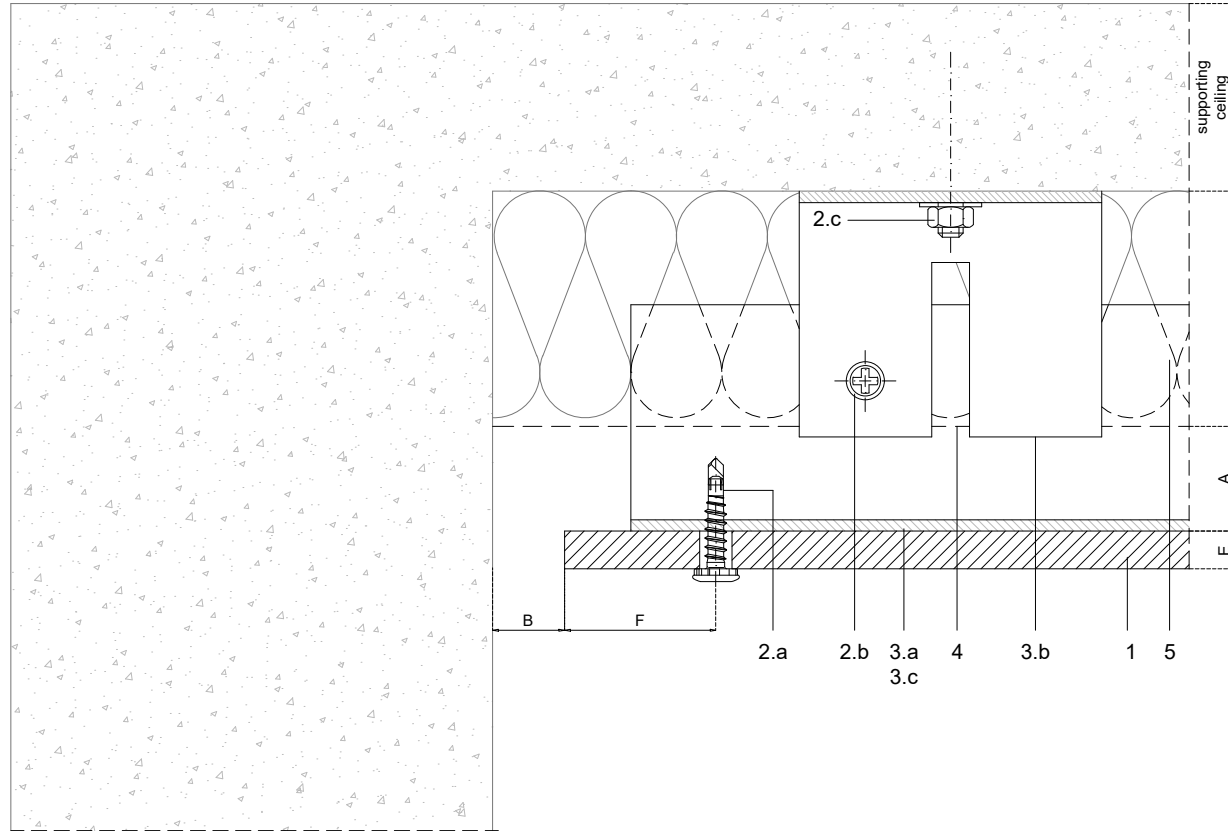
Scale 1:2

Measures: mm



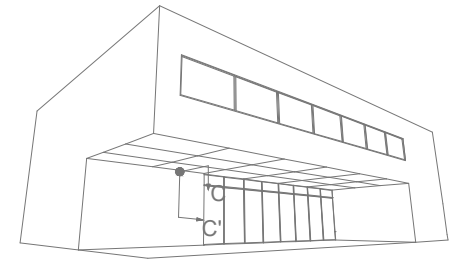
www.parklexprodema.com

| | | | | | | | |
|---------|-------------|--------|---|-------------|-------------------|------|---------|
| PRODUCT | NATURSOFFIT | SYSTEM | VISIBLE FASTENING WITH SCREWS, SOFFIT SYSTEM | DRAWN BY | Joseba Salbide | DATE | 01/2022 |
| PLAN# | NSF2-01-A-B | TITLE | DETAIL B-B' // JOINT DETAIL (GRAIN DIRECTION) | APPROVED BY | Maialen Irastorza | PAGE | 3 / 7 |



| | |
|-----|-------------------------------------|
| 1 | NATURSOFFIT |
| 2 | Screws |
| 2.a | Panel fastener metal |
| 2.b | Channel fastener - by others |
| 2.c | Wall fixing screw - by others |
| 3 | Profiles |
| 3.a | Aluminium L profile (40x60) |
| 3.b | Wall bracket |
| 3.c | Aluminium T profile |
| 3.d | Corner profile - by others |
| 4 | Water resistant barrier - by others |
| 5 | Thermal insulation - by others |

| | |
|---|---|
| A | Required min. air chamber $\geq 20\text{mm}$ |
| B | Circulation of air $\geq 20\text{mm}$ |
| D | Expansion joint 6-8mm |
| E | Panel thickness $\geq 8\text{mm}$ |
| F | Distance from the screws to the panel 20-40mm |

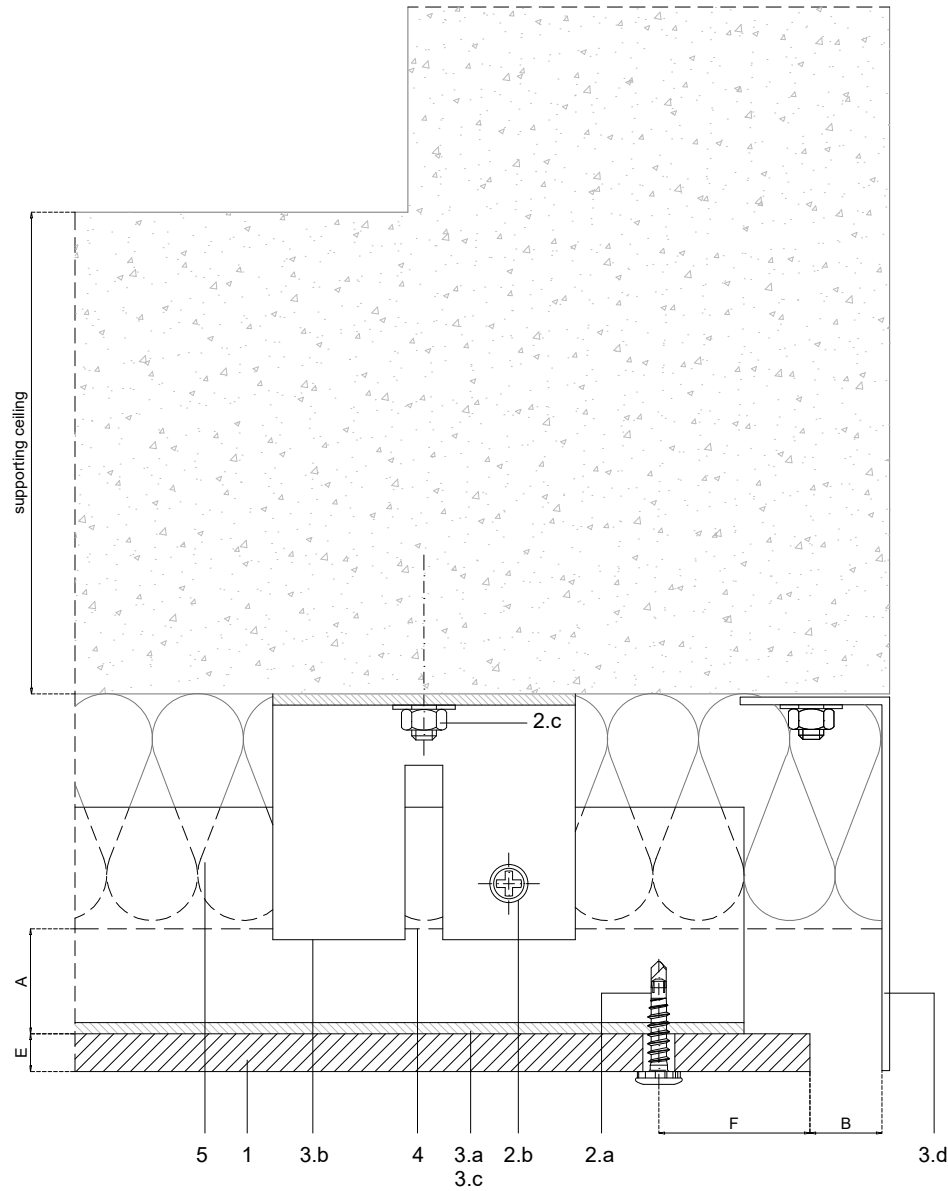


Scale 1:2

Measures: mm

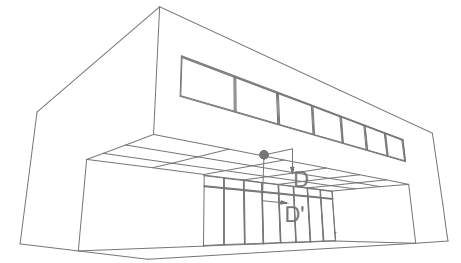
PARKLEX PRODEMA
www.parklexprodema.com

| | | | | | | | |
|---------|-------------|--------|---|-------------|-------------------|------|---------|
| PRODUCT | NATURSOFFIT | SYSTEM | VISIBLE FASTENING WITH SCREWS, SOFFIT SYSTEM | DRAWN BY | Joseba Salbide | DATE | 01/2022 |
| PLAN# | NSF2-01-A-C | TITLE | DETAIL C-C' // SOFFIT-WALL INTERIOR CORNER (PERP. TO GRAIN DIRECTION) | APPROVED BY | Maialen Irastorza | PAGE | 4 / 7 |



| | |
|-----|-------------------------------------|
| 1 | NATURSOFFIT |
| 2 | Screws |
| 2.a | Panel fastener metal |
| 2.b | Channel fastener - by others |
| 2.c | Wall fixing screw - by others |
| 3 | Profiles |
| 3.a | Aluminium L profile (40x60) |
| 3.b | Wall bracket |
| 3.c | Aluminium T profile |
| 3.d | Corner profile - by others |
| 4 | Water resistant barrier - by others |
| 5 | Thermal insulation - by others |

| | |
|---|---|
| A | Required min. air chamber $\geq 20\text{mm}$ |
| B | Circulation of air $\geq 20\text{mm}$ |
| D | Expansion joint 6-8mm |
| E | Panel thickness $\geq 8\text{mm}$ |
| F | Distance from the screws to the panel 20-40mm |



Scale 1:2

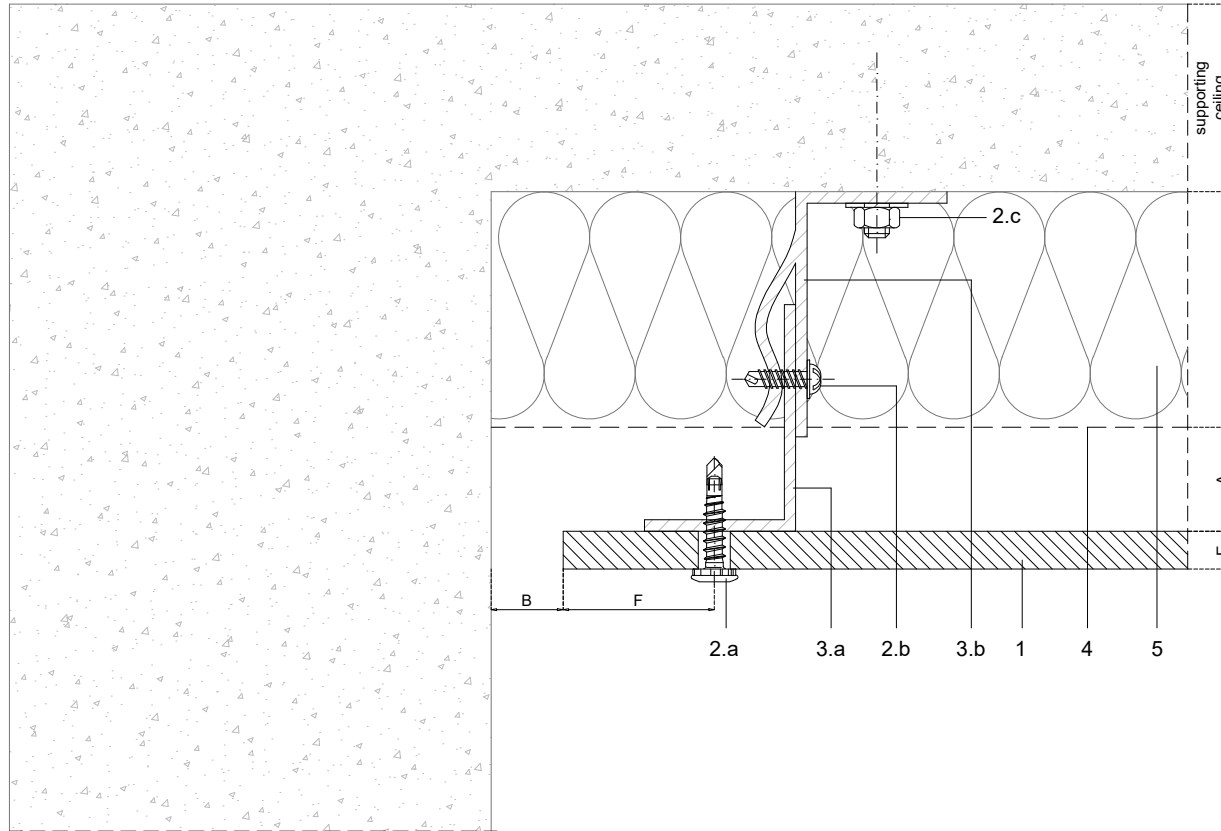
Measures: mm

PARKLEX PRODEMA
www.parklexprodema.com

| | |
|---------|-------------|
| PRODUCT | NATURSOFFIT |
| PLAN# | NSF2-01-A-D |

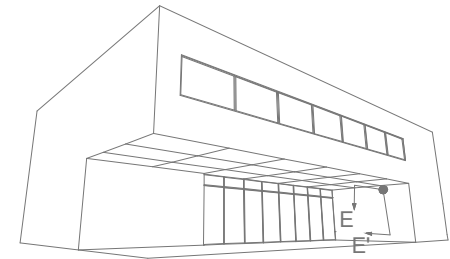
| | |
|--------|---|
| SYSTEM | VISIBLE FASTENING WITH SCREWS, SOFFIT SYSTEM |
| TITLE | DETAIL D-D' // SOFFIT-WALL EXTERIOR CORNER (PERP. TO GRAIN DIRECTION) |

| | | | |
|-------------|-------------------|------|---------|
| DRAWN BY | Joseba Salbide | DATE | 01/2022 |
| APPROVED BY | Maielen Irastorza | PAGE | 5 / 7 |



| | |
|-----|-------------------------------------|
| 1 | NATURSOFFIT |
| 2 | Screws |
| 2.a | Panel fastener metal |
| 2.b | Channel fastener - by others |
| 2.c | Wall fixing screw - by others |
| 3 | Profiles |
| 3.a | Aluminium L profile (40x60) |
| 3.b | Wall bracket |
| 3.c | Aluminium T profile |
| 3.d | Corner profile - by others |
| 4 | Water resistant barrier - by others |
| 5 | Thermal insulation - by others |

| | |
|---|---|
| A | Required min. air chamber $\geq 20\text{mm}$ |
| B | Circulation of air $\geq 20\text{mm}$ |
| D | Expansion joint 6-8mm |
| E | Panel thickness $\geq 8\text{mm}$ |
| F | Distance from the screws to the panel 20-40mm |

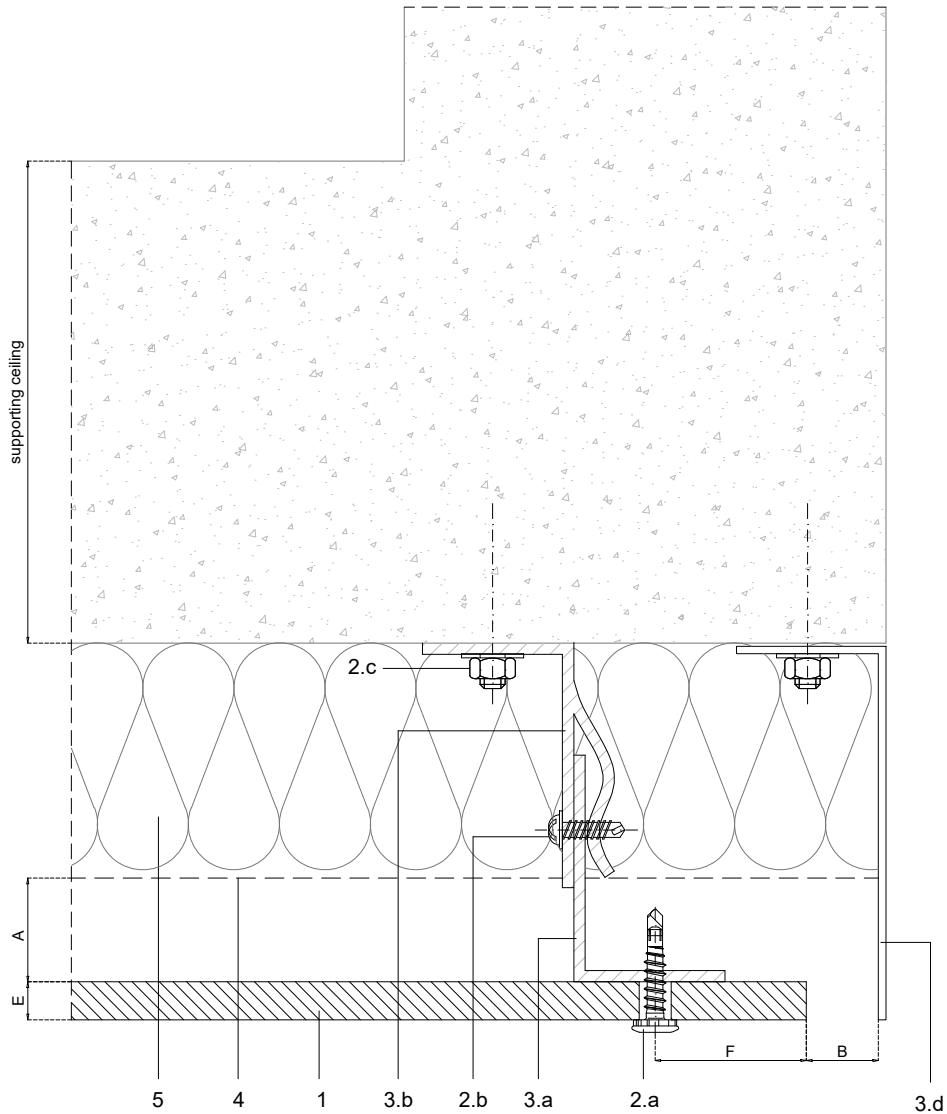


Scale 1:2

Measures: mm

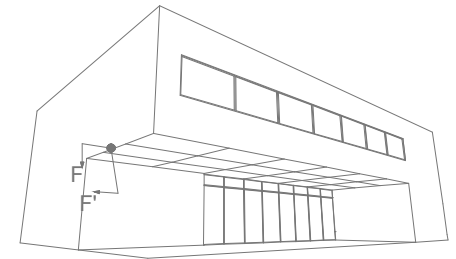
PARKLEX PRODEMA
www.parklexprodema.com

| | | | | | | | |
|---------|-------------|--------|--|-------------|-------------------|------|---------|
| PRODUCT | NATURSOFFIT | SYSTEM | VISIBLE FASTENING WITH SCREWS, SOFFIT SYSTEM | DRAWN BY | Joseba Salbide | DATE | 01/2022 |
| PLAN# | NSF2-01-A-E | TITLE | DETAIL E-E' // SOFFIT-WALL INTERIOR CORNER (GRAIN DIRECTION) | APPROVED BY | Maialen Irastorza | PAGE | 6 / 7 |



| | |
|-----|-------------------------------------|
| 1 | NATURSOFFIT |
| 2 | Screws |
| 2.a | Panel fastener metal |
| 2.b | Channel fastener - by others |
| 2.c | Wall fixing screw - by others |
| 3 | Profiles |
| 3.a | Aluminium L profile (40x60) |
| 3.b | Wall bracket |
| 3.c | Aluminium T profile |
| 3.d | Corner profile - by others |
| 4 | Water resistant barrier - by others |
| 5 | Thermal insulation - by others |

| | |
|---|---|
| A | Required min. air chamber $\geq 20\text{mm}$ |
| B | Circulation of air $\geq 20\text{mm}$ |
| D | Expansion joint 6-8mm |
| E | Panel thickness $\geq 8\text{mm}$ |
| F | Distance from the screws to the panel 20-40mm |



Scale 1:2

Measures: mm

PARKLEX PRODEMA
www.parklexprodema.com

| | | | | | | | |
|---------|-------------|--------|---|-------------|-------------------|------|---------|
| PRODUCT | NATURSOFFIT | SYSTEM | VISIBLE FASTENING WITH SCREWS, SOFFIT SYSTEM | DRAWN BY | Joseba Salbide | DATE | 01/2022 |
| PLAN# | NSF2-01-A-F | TITLE | DETAIL F-F // SOFFIT-WALL EXTERIOR CORNER (GRAIN DIRECTION) | APPROVED BY | Maialen Irastorza | PAGE | 7 / 7 |