



ALLFACE



ALLFACE

Your Global Partner for Advanced Facade Solutions

- We are experts in providing advanced facade solutions globally.
- Our engineering knowledge is impressive and allows us to deliver innovative and high-performance facade systems.
- Our production facility is equipped with state-of-the-art equipment, which enables us to produce high-quality components with precision and efficiency.

At Allface, we are proud to be a leading facade specialist, consistently delivering cutting-edge solutions that meet the highest standards of quality, performance, and aesthetics. We work both domestically and internationally to ensure that our customers receive the best possible service.



ALLFACE

- founded 2006
- Head office Leobersdorf Austria
- Production facility Ebenthal Austria
- 30 Employees
- distribution partners worldwide



Systems and Applications

We supply patented quality fastening technology for all types of facades, including customised solutions.



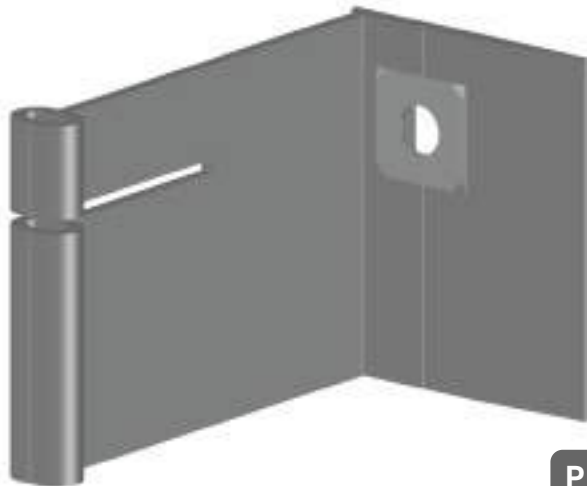
<https://www.allface.com/system/systems.html>



News

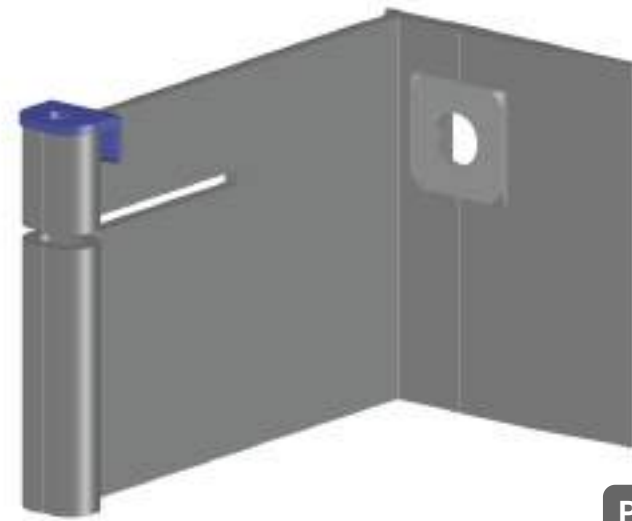
Bracket F8

- Vertical bracket for horizontal rails
- Expansion of the profiles is possible - fixed and sliding connections
- Patent



PDF

F8 Fix



PDF



Engineering Services



Engineering Services

Estimating:

Based on the information provided by you, in particular drawings of the project and related details, our experts select the right system solution and prepare a quotation.

Structural Analysis:

Once we determine the fastening system for your project, we will do the structural analysis. We take into account all relevant regulations and standards for your country or region, as well as any specific project requirements. After we finish the calculation, we'll give you the results for the project and necessary approvals for the selected products.



Engineering Services

Shop Drawings:

Our engineers create installation drawings based on the panel layouts and details. This includes installation drawings, component lists, cutting lists and special elements. This service allows you to enable effective installation and smooth construction processes.

Thermal Calculations:

We create a thermal calculation for the selected system and total wall construction based on the project's requirements. We use Ansys 3D modelling software to accurately calculate the required U-value or R-value.



Engineering Services

Project management:

For complex projects, coordination of communication and timing is crucial. Our experienced project managers, are highly qualified organizer who fully understands the process. Our motivation is to ensure the best outcome for all involved in the project. Engineering Services

Optimised cuts and special components:

We can manufacture special components, cut-to-size parts, and prefabricated parts specifically for your project in our production facility. Our highly trained employees ensure timely and reliable delivery, and our production facilities guarantee high component quality.



Realized Projects



Pingo Doce

Pingo Doce, Shoppingmall

Location: São Miguel, Azores

Allface System F1.10

Facade panels: Steni Colour, Steni Nature

Architects: Box Architects



Pingo Doce Shopping Mall | STENI AS

[archello.com](https://www.archello.com)



ZNA Antwerp

17ZNA CADIX, Hospital

Location: *Antwerp, Belgium*

Allface System: F1.10

Facade panels: 16.000 m² Tonality

Architects: Robbrecht en Daem Architecten & VK
Architekten & Ingenieure



Allface - ZNA Cadix Antwerp,

www.allface.com



Library in Nokia

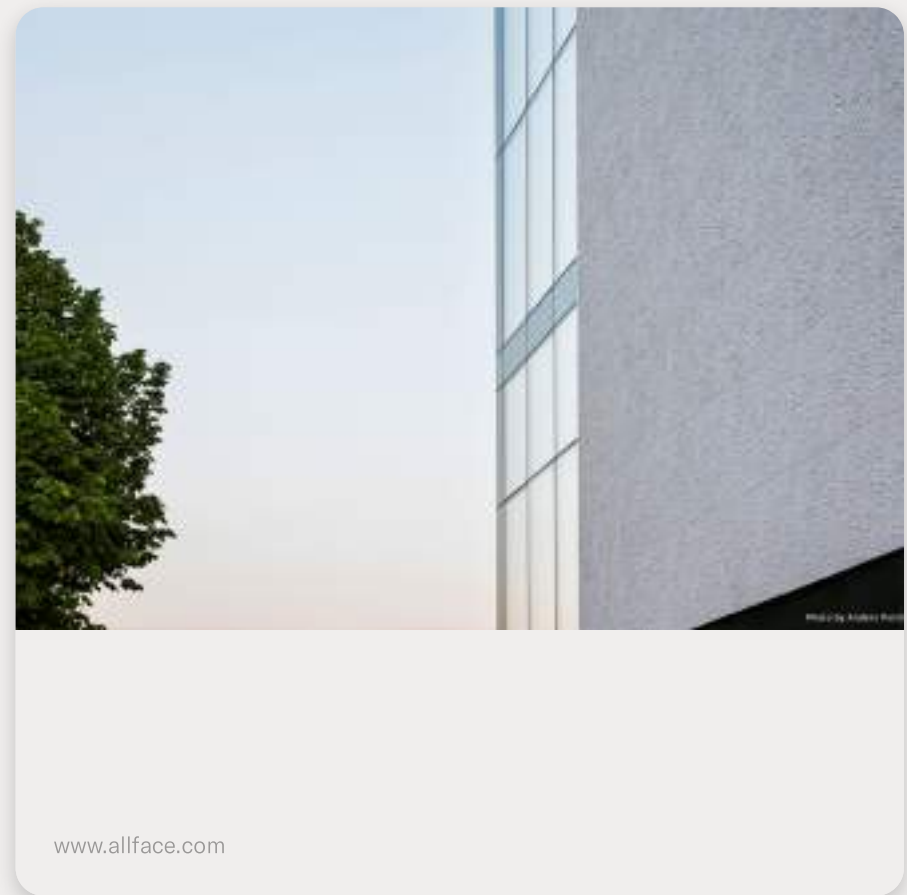
New Library

Location: Nokia, Finland

Allface System F1.10

Facade panels: 1.200 m² Ulma Texture Paper,
Colour White M24

Architect: Studio Tilatakomo Oy, Pekka Koli



www.allface.com



3D Facade

Fazer Chocolate

Location: Helsinki, Finland

Allface System F1.10

Panels: 1.000 m² ULMA Architectural Solutions,
3D Creative Range

Architect: K2S Architects, Mikko Summannen



www.allface.com



NMAHC

NMAHC, National Museum of African American History and Culture

Location: Washington DC, USA

Allface System F1.40

Facade panels: 3.000 m² Fibre concrete (GRC)

Architects: Adjaye Associates & The Freelon Group



Allface - NMAAHC Washington DC,

www.allface.com



HQ Papyrus

Headoffice Papyrus

Location: Perchtoldsdorf, Austria

Allface System: F1.10, F1.29

Facade panels: 1.500 m² Argeton by
Wienerberger

Architects: VENELLI KRAMER Architetti



www.allface.com



Lewisham GW

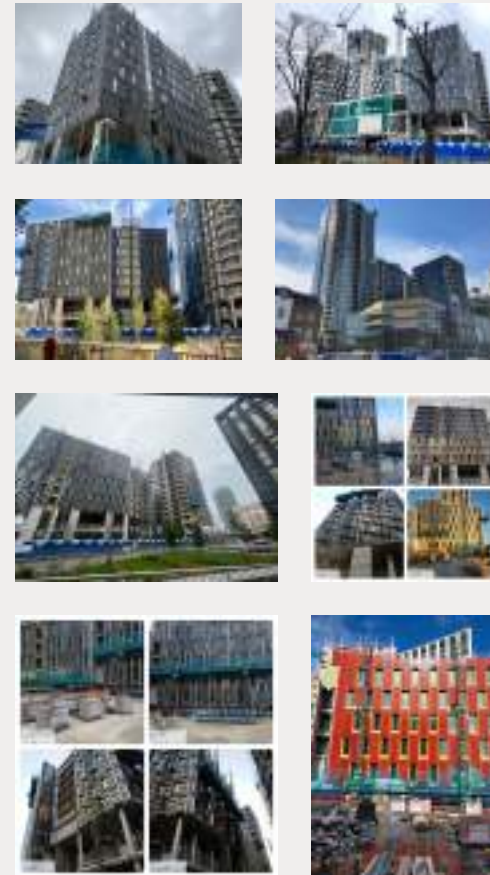
Lewisham Gateway by Lindner Prater Ltd.

Location: Lewisham, UK

Allface System: F1.10

Facade panels: 8.000 m² NBK Terracotta & Solid Aluminium panels

Architects: UNSTUDIO & British Axis Architects Studio



Nine Elms

Nine Elms by TGM from NL

Location: Nine Elms, London, UK

Allface System: F1.29, F1.10, F1.59 & customized

Facade panels: 16.000 m² NBK Terracotta, GRC
by BB fiberbeton, Solid aluminium panels

Architects: Allies and Morrison Architects and
Camlins Landscape Architects



Thank you!

www.allface.com



Allface Befestigungstechnologie GmbH

